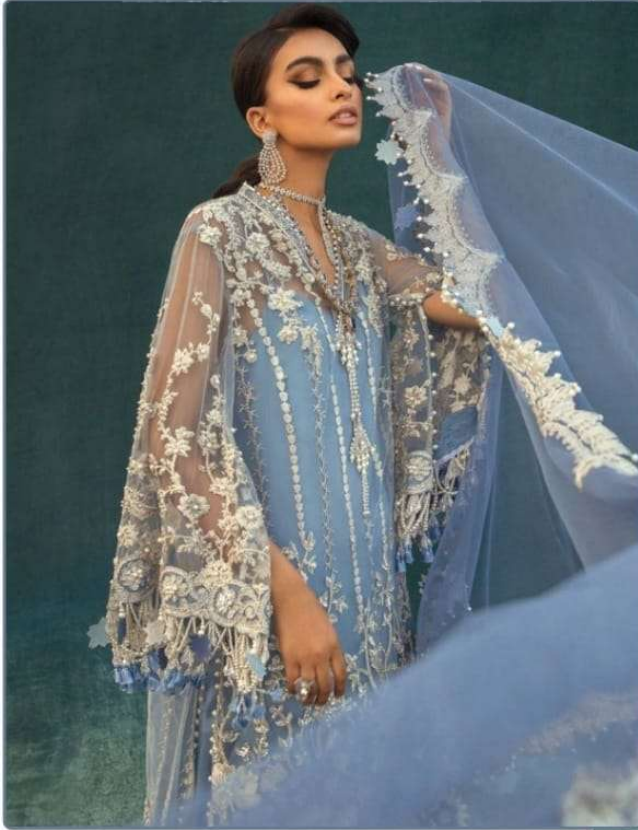


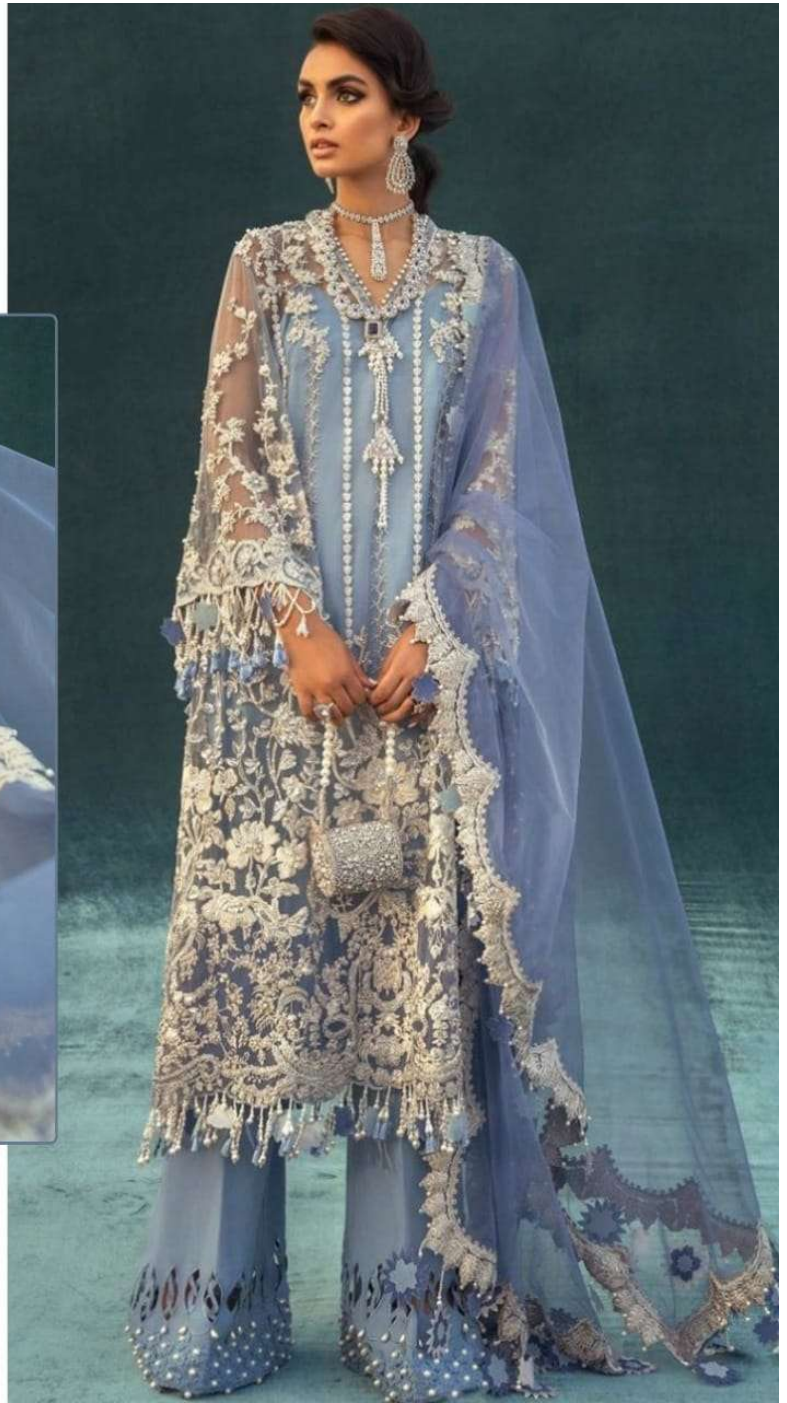


#R-353



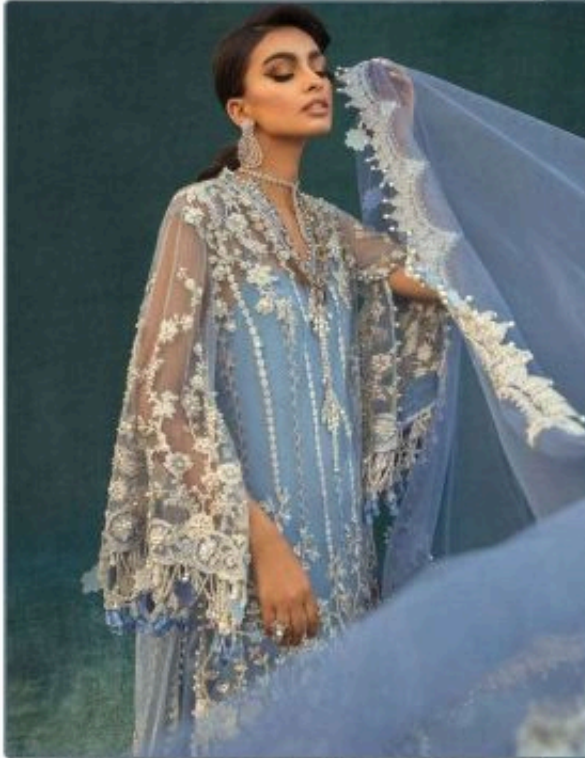
TOP- BUTTER FLY NET WITH HEAVY EMBROIDERY
BOTTOM- DULL SANTOON
DUPATTA - NET WITH HEAVY EMBROIDERY

- Ⓟ DRY CLEAN ONLY.
- ✘ DO NOT USE ANY BLEACH OR STAIN REMOVING CHEMICAL.
- ☎ IRON THE FABRIC AT MODERATE TEMPERATURE.



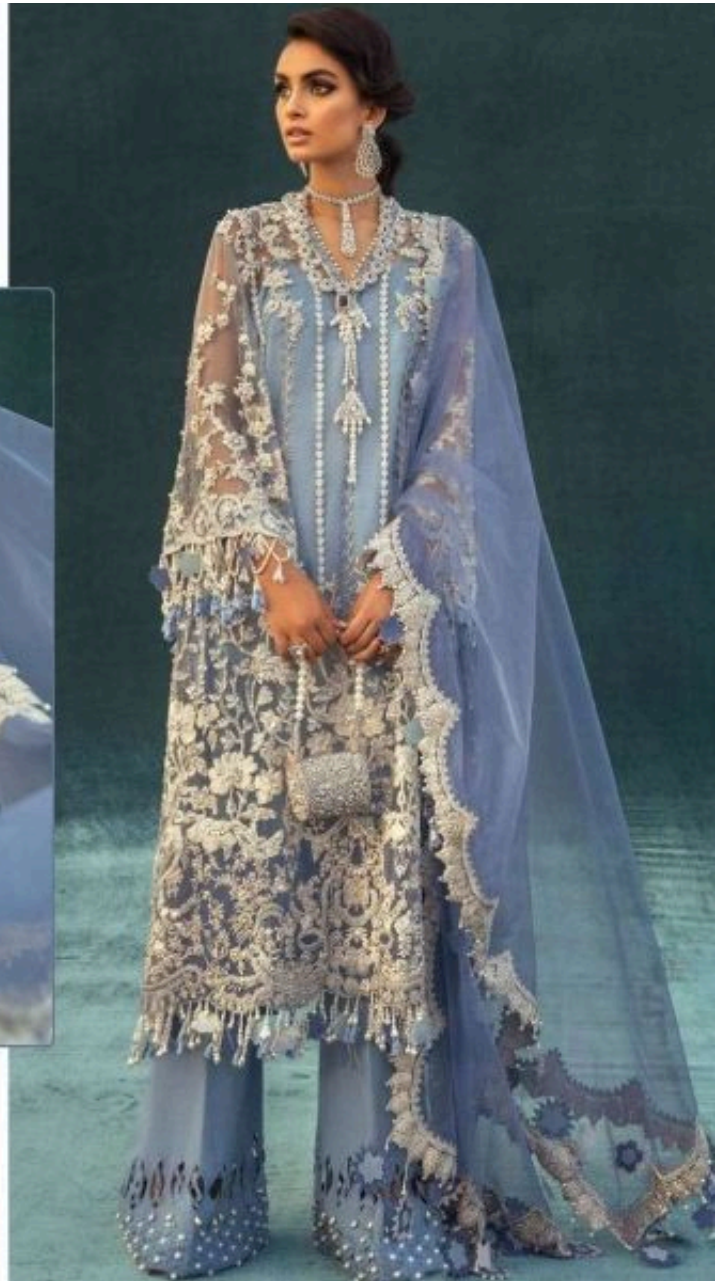

Ramsha®

#R-353



TOP- BUTTER FLY NET WITH HEAVY EMBROIDERY
BOTTOM- DULL SANTOON
DUPATTA - NET WITH HEAVY EMBROIDERY

- ☑ DRY CLEAN ONLY.
- ✗ DO NOT USE ANY BLEACH OR STAIN REMOVING CHEMICAL.
- ☑ IRON THE FABRIC AT MODERATE TEMPERATURE.





#R-351



TOP- FOX GEORGET WITH HEAVY EMBROIDERY
BOTTOM- DULL SANTOON
DUPATTA - NAZMEEN WITH HEAVY EMBROIDERY

- ☑ DRY CLEAN ONLY.
- ✗ DO NOT USE ANY BLEACH OR STAIN REMOVING CHEMICAL.
- ☑ IRON THE FABRIC AT MODERATE TEMPERATURE.




Ramsha®

#R-352



TOP- BUTTER FLY NET WITH HEAVY EMBROIDERY
BOTTOM- DULL SANTOON
DUPATTA - NET WITH HEAVY EMBROIDERY

- ☑ DRY CLEAN ONLY.
- ✗ DO NOT USE ANY BLEACH OR STAIN REMOVING CHEMICAL.
- ☑ IRON THE FABRIC AT MODERATE TEMPERATURE.



**Ramsha**[®]

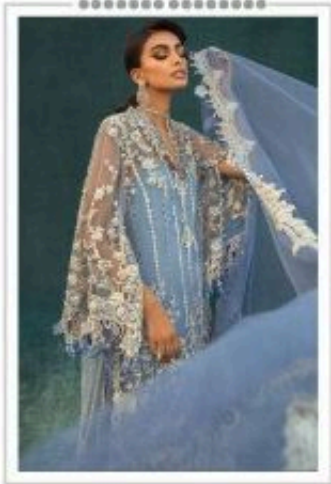
#R-354



TOP- FOX GEORGET WITH HEAVY EMBROIDERY
BOTTOM- DULL SANTOON
DUPATTA - NAZMEEN WITH HEAVY EMBROIDERY

- ☑ DRY CLEAN ONLY.
- ✗ DO NOT USE ANY BLEACH OR STAIN REMOVING CHEMICAL.
- ☑ IRON THE FABRIC AT MODERATE TEMPERATURE.





#R-351



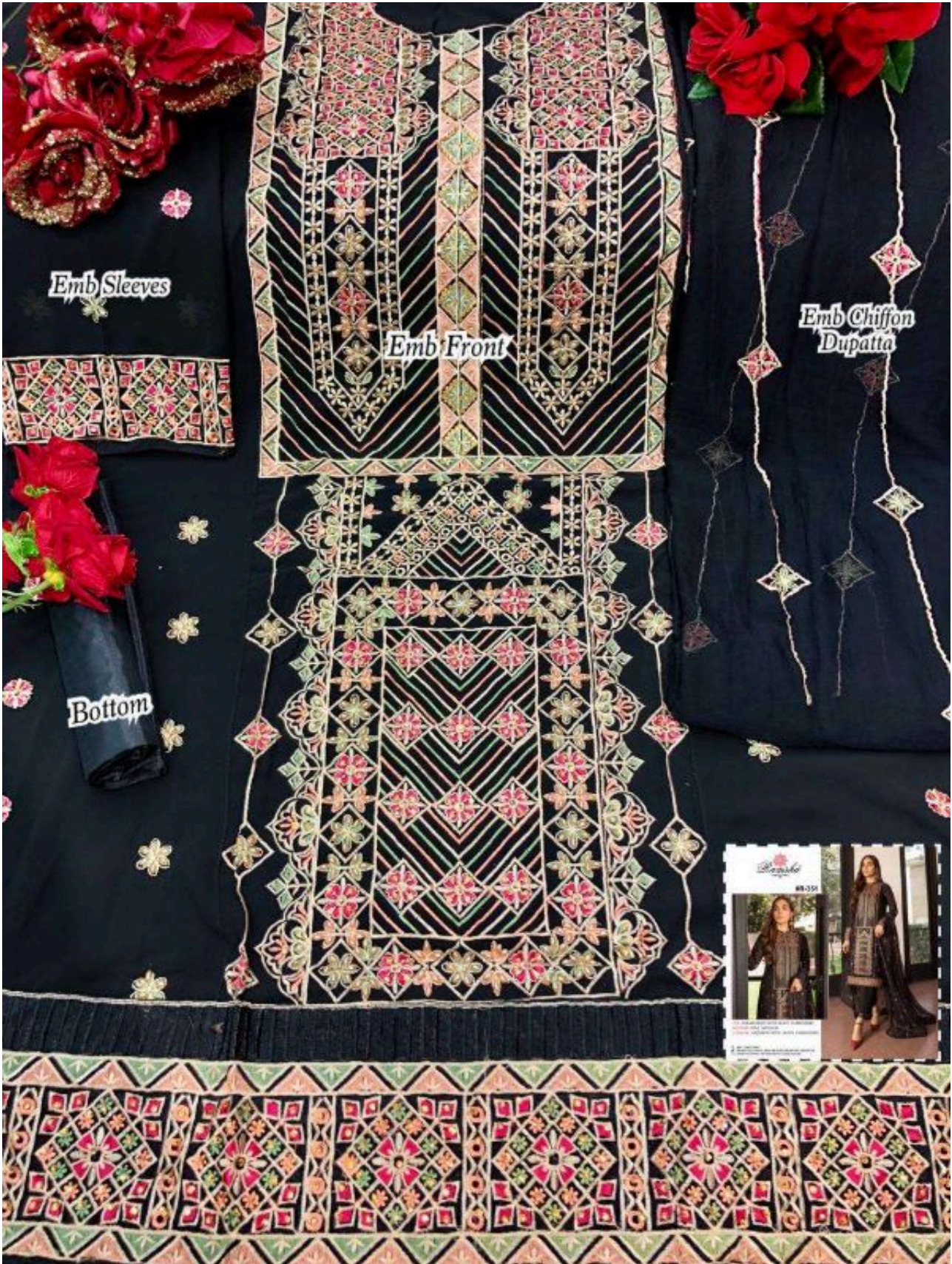
#R-352



#R-353



#R-354



Emb Sleeves

Emb Front

Emb Chiffon Dupatta

Bottom



BR-055



Emb Sleeves

Emb Front

Emb Net Dupatta

Bottom





Emb Sleeves

Emb Front

Emb Net Dupatta

Bottom





Emb Sleeves

Emb Front

Bottom

Emb Chiffon Dupatta

