

A woman with long, dark, wavy hair is standing against a rustic stone wall. She is wearing a dark brown saree with a gold and red floral pattern. Her blouse is a textured, rust-colored short-sleeved top. She is adorned with a red and gold necklace, multiple bangles on her right wrist, and a ring on her right hand. A wooden railing is visible in the foreground, partially obscuring the bottom right of the image.

5D
DESIGNER

JAITHRA



QUEENLY
WOMEN'S WEAR





EVERYTHING
EXCLUSIVE 100000 1001





COLLECTION 1002





STUNNING
SILK & COTTON FABRICS | 1003



GLAMOROUS
1004



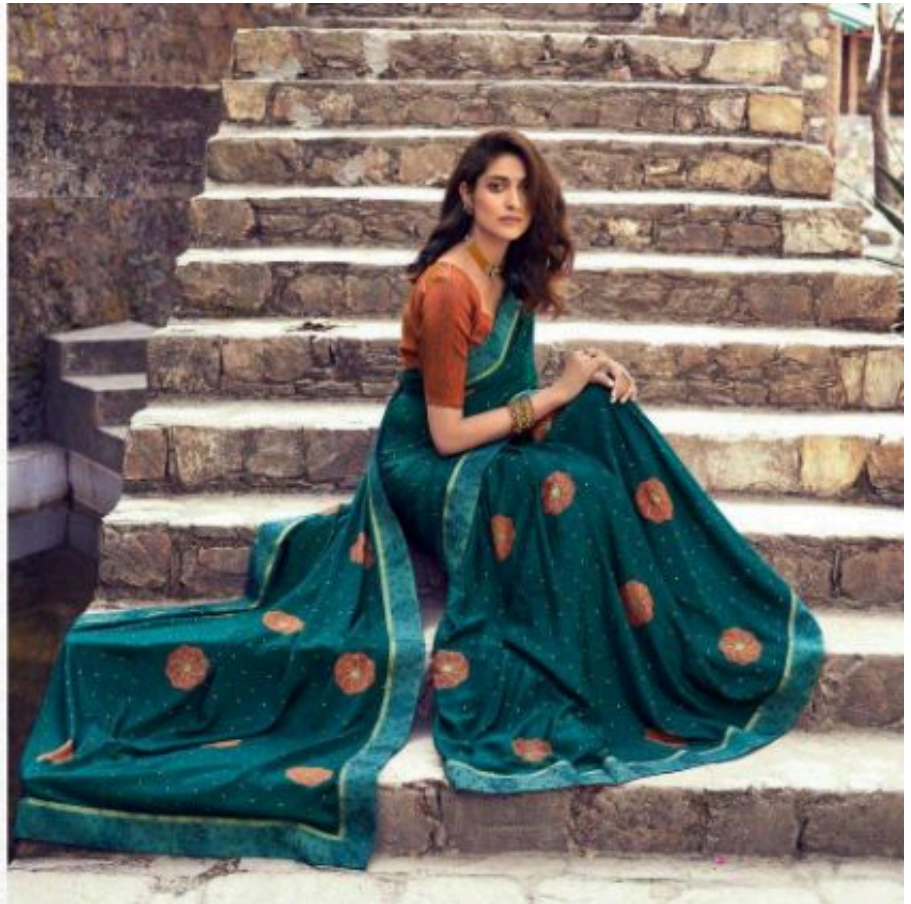


TRADITIONAL | 1005





TRADITIONAL
ELEGANCE







ENCHANTING
ENCHANTING FABRICA | 1007





1001



1002



1003



1004



1005



1006



1007



1008

5D
DESIGNER

JAITHRA

