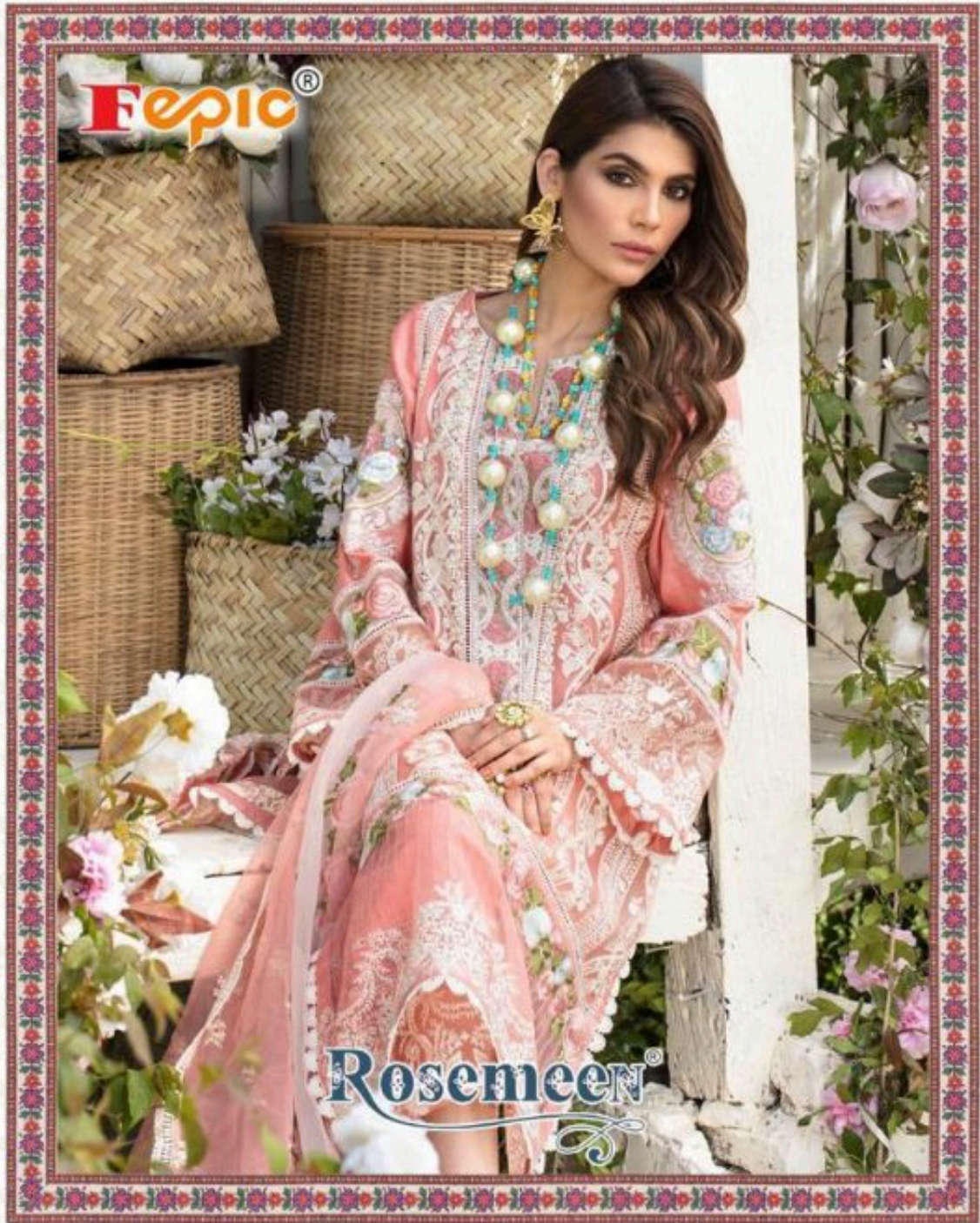


Fepic®

Rosemeen®



CRIMSON
Lacón COLLECTION



C
CRIMSON
Lawn COLLECTION

Fepic®



WASHING INSTRUCTIONS

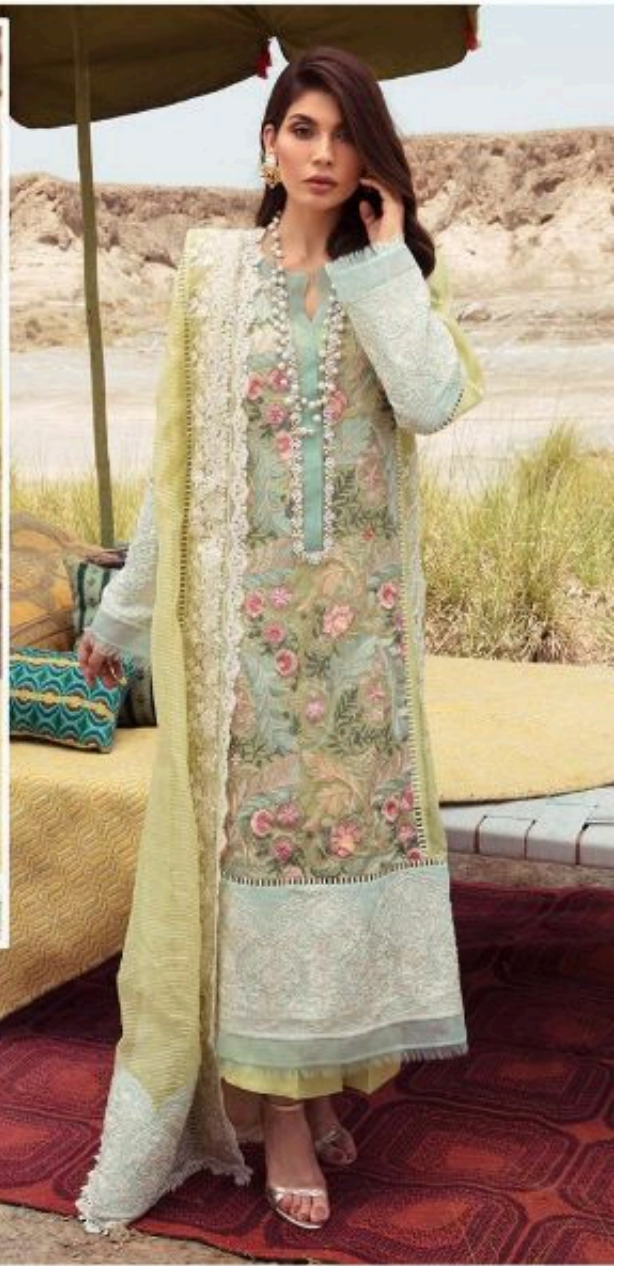
DO NOT USE ANY TYPE OF BLEACH OR STAIN REMOVING CHEMICALS BEFORE CUTTING / STITCHING. FABRIC SHOULD BE SOAKED IN WATER (ALL COMPONENTS SEPARATELY) FOR 15 MINUTES
DO NOT KEEP WET FABRIC IN TWISTED FORM IN ORDER TO AVOID COPY MARKS | WASH COLOURED AND WHITE FABRICS SEPARATELY
IRON CLOTHES AT MODERATE TEMPERATURE | DO NOT DRY FABRIC IN DIRECT SUNLIGHT (EXTRA LACES, HANGINGS AND ACCESSORIES ARE NOT INCLUDED)

Rosemeen®

C
CRAMSON
Lawn COLLECTION



D.NO.40003



WASHING INSTRUCTIONS

DO NOT USE ANY TYPE OF BLEACH OR STAIN REMOVING CHEMICALS BEFORE CUTTING / STITCHING. FABRIC SHOULD BE SOAKED IN WATER (ALL COMPONENTS SEPARATELY) FOR 15 MINUTES
 DO NOT KEEP WET FABRIC IN TWISTED FORM IN ORDER TO AVOID COPY MARKS | WASH COLOURED AND WHITE FABRICS SEPARATELY
 IRON CLOTHES AT MODERATE TEMPERATURE | DO NOT DRY FABRIC IN DIRECT SUNLIGHT (EXTRA LACES, HANGINGS AND ACCESSORIES ARE NOT INCLUDED)

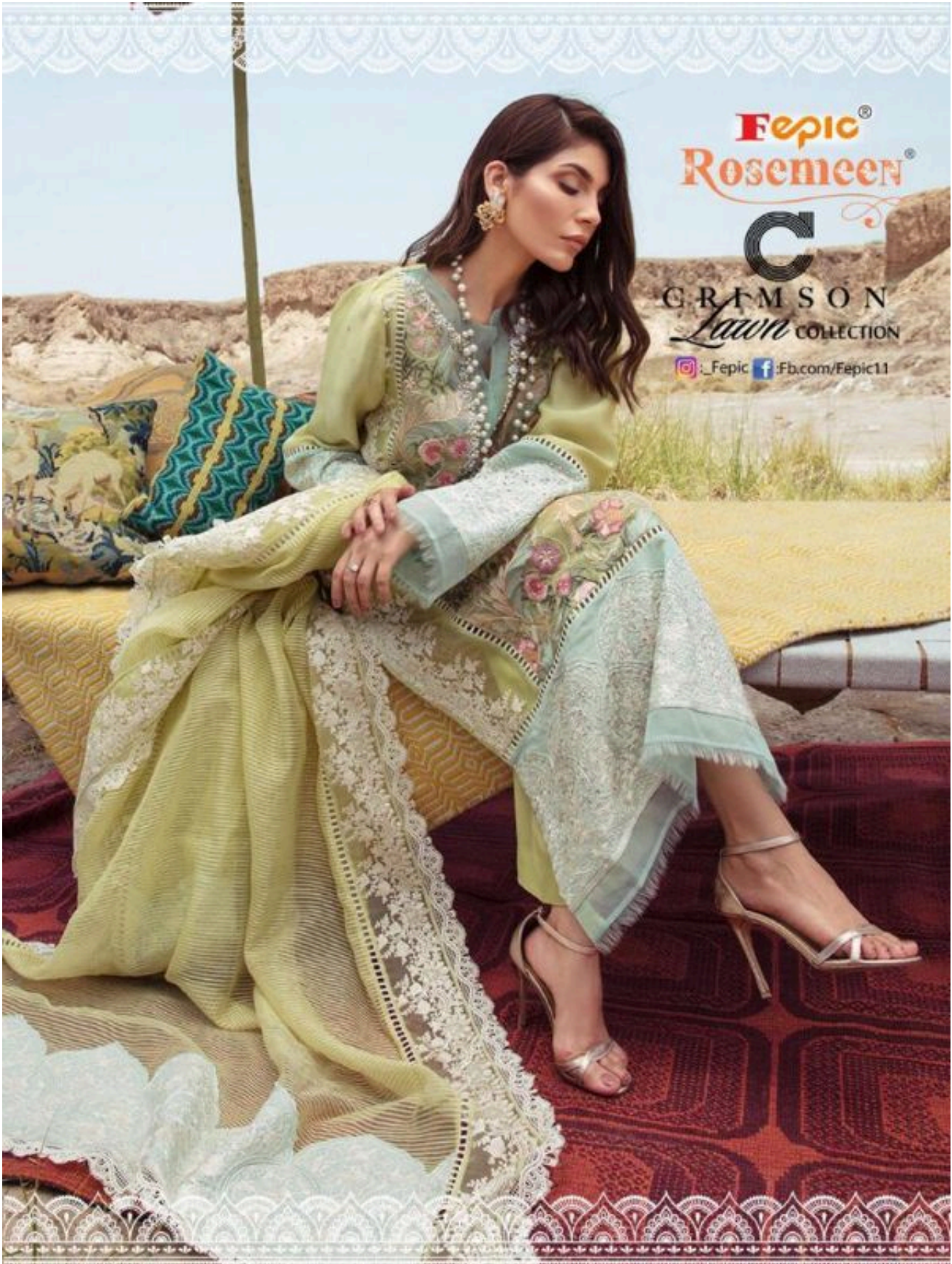
Rosemeen

C
 CRAMSON
Lawn COLLECTION



D.NO.40002







Fepic[®]
Rosemeen[®]



CRIMSON
Lawn COLLECTION

 [_Fepic](#)  [Fb.com/Fepic11](#)

Fepic®

Rosemeen



CRIMSON
Lawn COLLECTION

Fepic® Rosemeen®

Instagram: @_Fepic

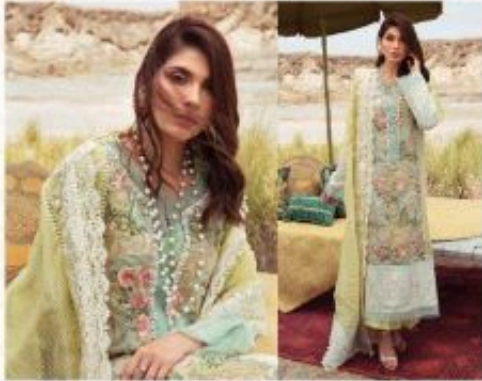
Facebook: .Fb.com/Fepic11

CREMSON
Lawn COLLECTION





D.NO.40001



D.NO.40002



D.NO.40003



Fepic®

Instagram: @fepic Facebook: fb.com/fepic11

Rosemeen®

C
CRIMSON
Lawn COLLECTION



Epic®

WASHING INSTRUCTIONS

DO NOT USE ANY TYPE OF BLEACH OR STAIN REMOVING CHEMICALS BEFORE CUTTING / STITCHING. FABRIC SHOULD BE SOAKED IN WATER (ALL COMPONENTS SEPARATELY) FOR 15 MINUTES
 DO NOT KEEP WET FABRIC IN TWISTED FORM IN ORDER TO AVOID COPY MARKS | WASH COLOURED AND WHITE FABRICS SEPARATELY
 IRON CLOTHES AT MODERATE TEMPERATURE | DO NOT DRY FABRIC IN DIRECT SUNLIGHT (EXTRA LACES, HANGINGS AND ACCESSORIES ARE NOT INCLUDED)

Rosemeen®

C
CRAMSON
LacON COLLECTION



D.NO.40001