



**APANA COTTON**<sup>®</sup>  
Suit & Sarees

**Top- 2.5 Mtr.**  
**Bottom -2 Mtr.**  
**Dupatta-2.25 Mtr.**



**Razia Sultan**<sup>®</sup> VOL-33  
KARACHI COTTON ★★★







**Top- 2.5 Mtr.**  
**Bottom -2 Mtr.**  
**Dupatta-2.25 Mtr.**



*Grace & Lace*

there's a glimmer in her eye

33001











**Top- 2.5 Mtr.**  
**Bottom -2 Mtr.**  
**Dupatta-2.25 Mtr.**

*Resplendent Beauty*  
*Beauty*

Lighter of stamps



◆  
33002



**Top- 2.5 Mtr.**  
**Bottom -2 Mtr.**  
**Dupatta-2.25 Mtr.**







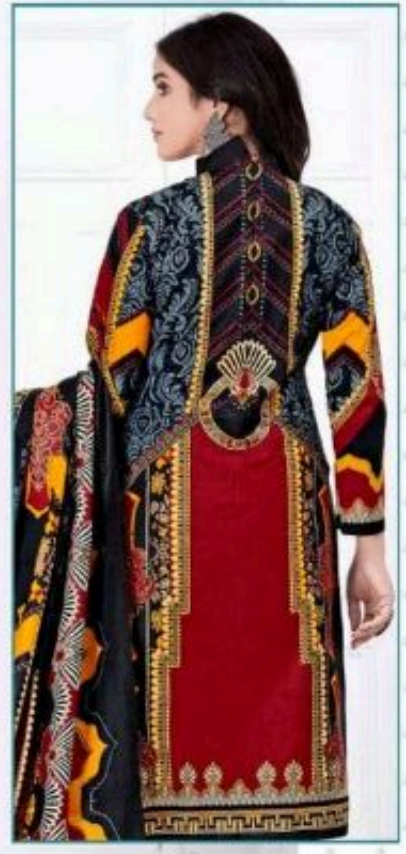
*Classy Lady*  
behind the scenes queen



33003



**Top- 2.5 Mtr.**  
**Bottom -2 Mtr.**  
**Dupatta-2.25 Mtr.**



33004









This season is all about strong hues mixed with vibrant floral to carefully redefine chic looks.



33005





**Top- 2.5 Mtr.**  
**Bottom -2 Mtr.**  
**Dupatta-2.25 Mtr.**





# Grace & Lace

there's a glimmer in her eye



33006



**Top- 2.5 Mtr.**  
**Bottom -2 Mtr.**  
**Dupatta-2.25 Mtr.**





**Top- 2.5 Mtr.**  
**Bottom -2 Mtr.**  
**Dupatta-2.25 Mtr.**







*Royal Record*

She sees possibility everywhere

33007



Royal Record  
She sees possibility everywhere.

Top- 2.5 Mtr.  
Bottom -2 Mtr.  
Dupatta-2.25 Mtr.







33008



**Top- 2.5 Mtr.**  
**Bottom -2 Mtr.**  
**Dupatta-2.25 Mtr.**



*Grace & Lace*

there's a glimmer in her eye.



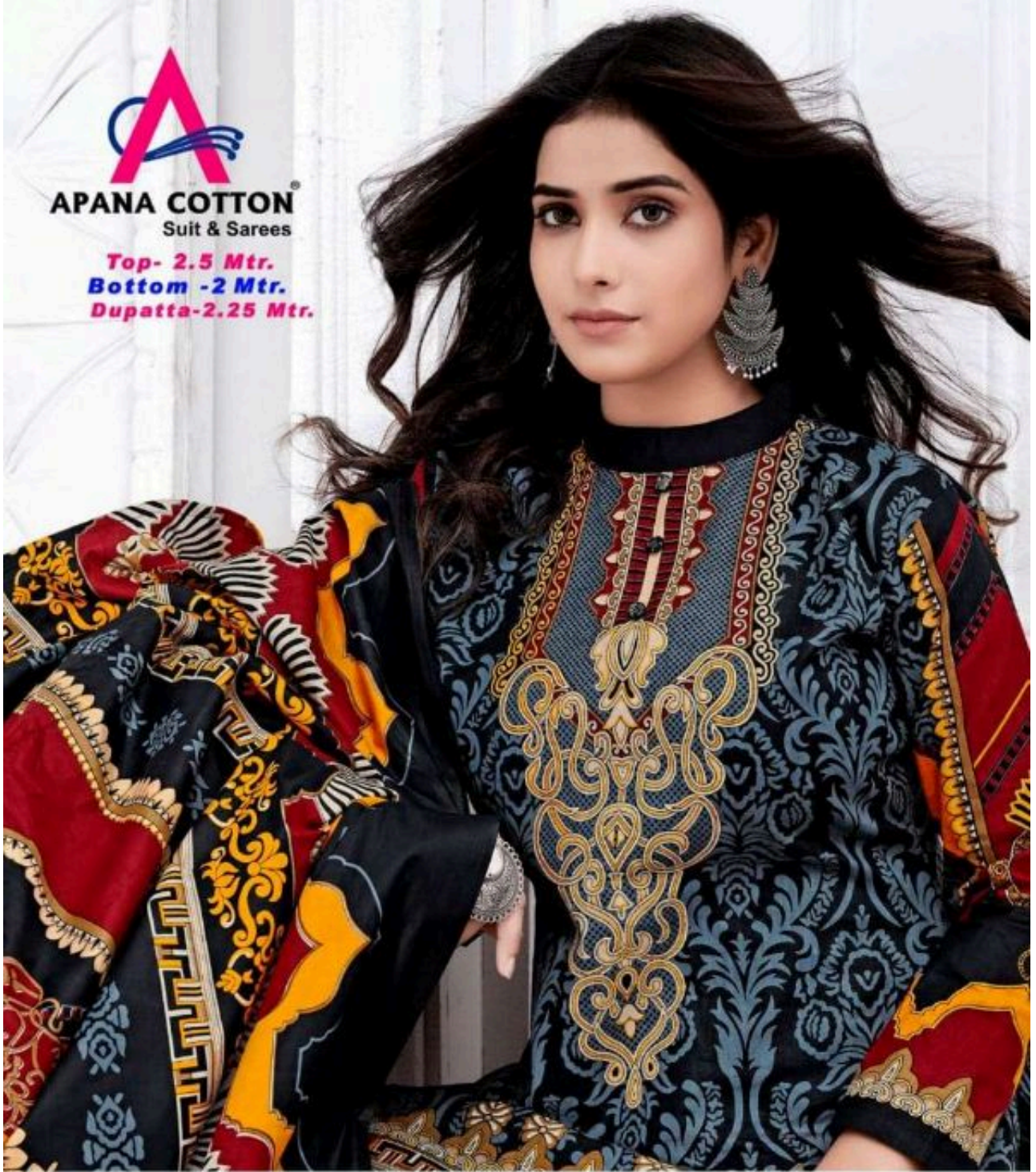
◆  
33009





**APANA COTTON**  
Suit & Sarees

**Top- 2.5 Mtr.**  
**Bottom -2 Mtr.**  
**Dupatta-2.25 Mtr.**



**Pazia Sultan** VOL-33  
KARACHI COTTON ★★ ★



# Fashion Opore

Welcome to the new age style, where an unmatched print's, design's and beautiful feeling's of fabric's.



33010



**Top- 2.5 Mtr.**  
**Bottom -2 Mtr.**  
**Dupatta-2.25 Mtr.**







33001



33002



33003



33004



33005



33006



33007



33008



33009



33010