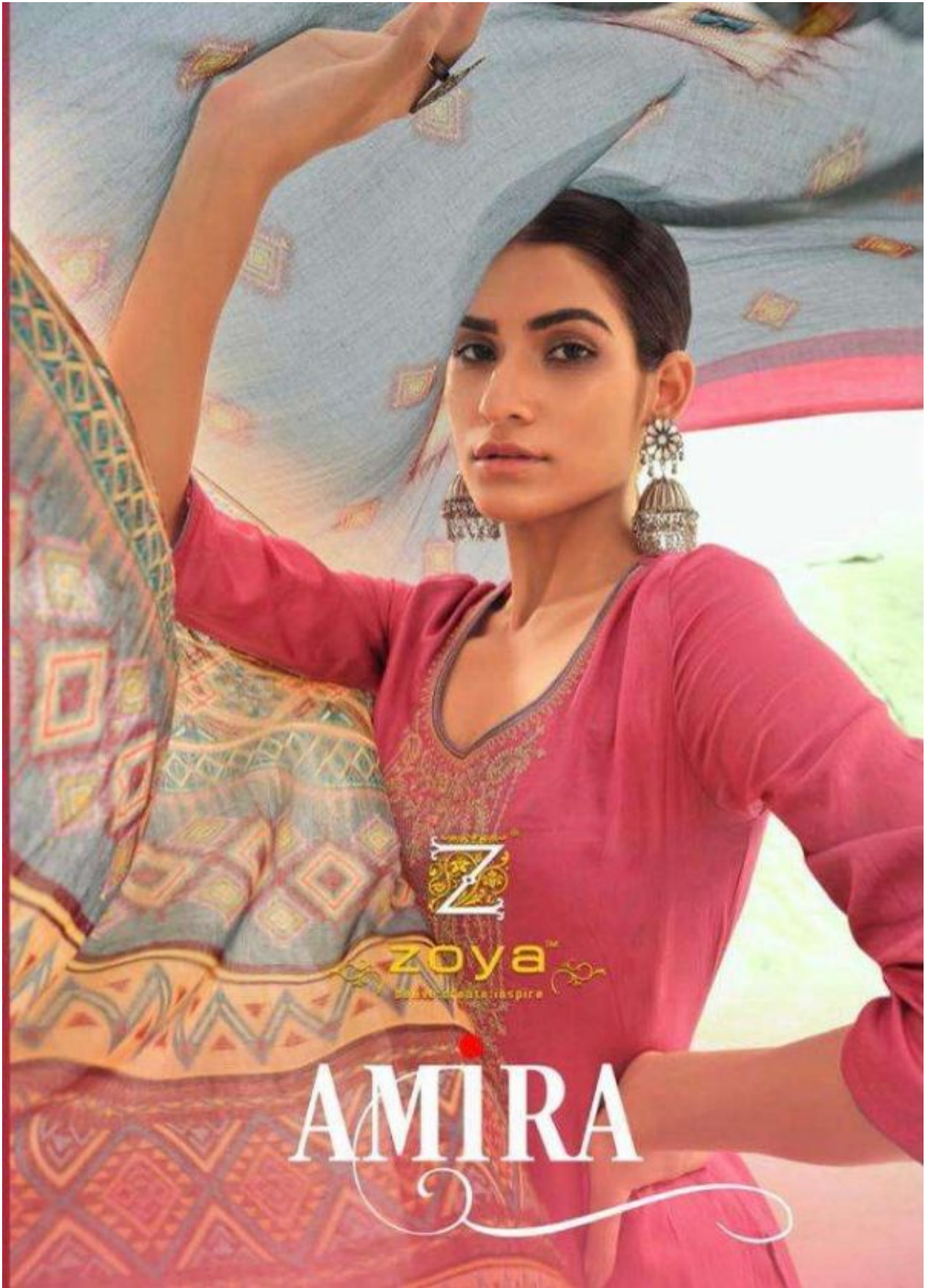


zoya

zoya™

Don't dream, aspire

AMIRA



Z

zoya™

soave deata iraspire

AMIRA





37001



37001





37033

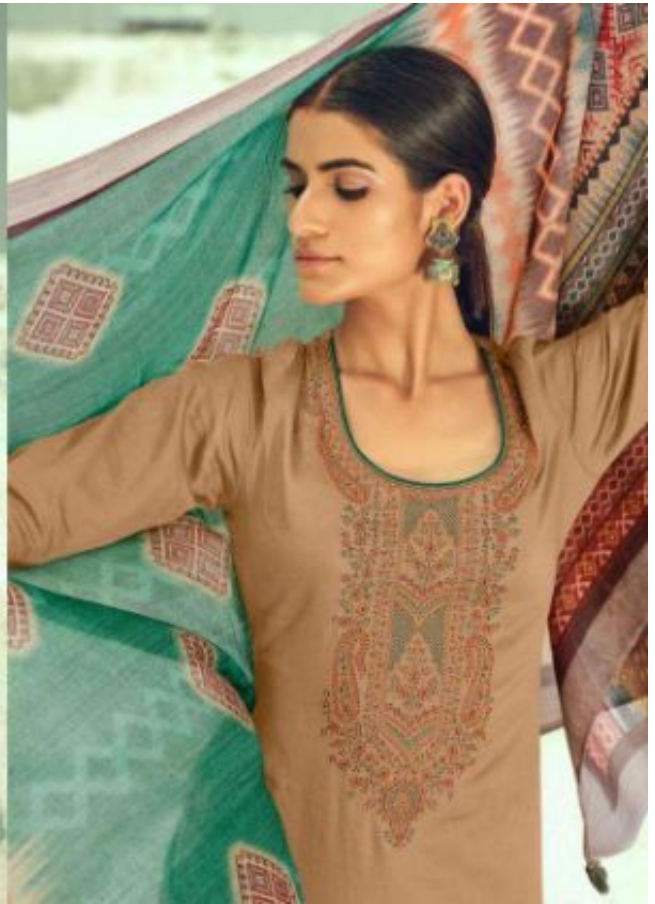
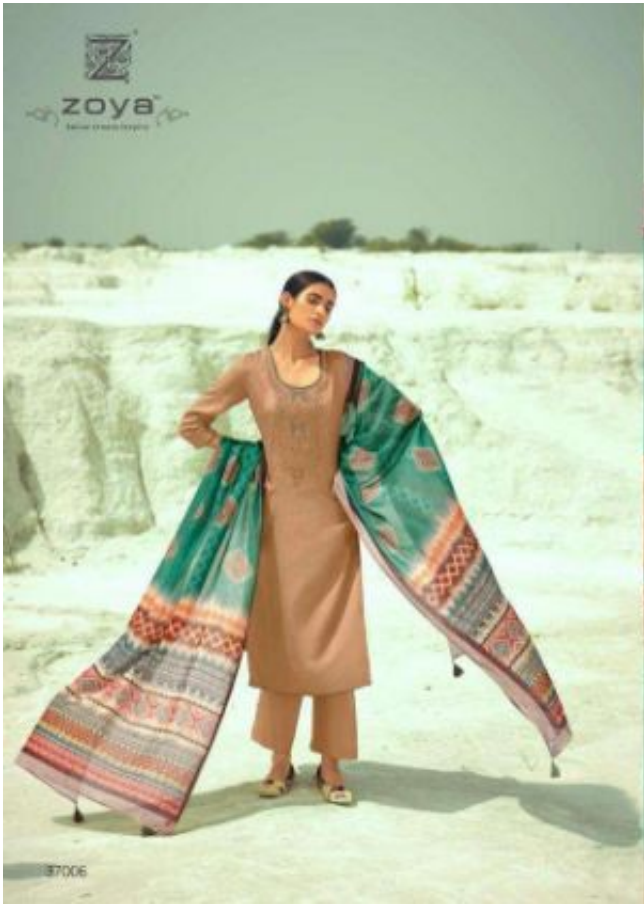

zoya
SINCE 1985

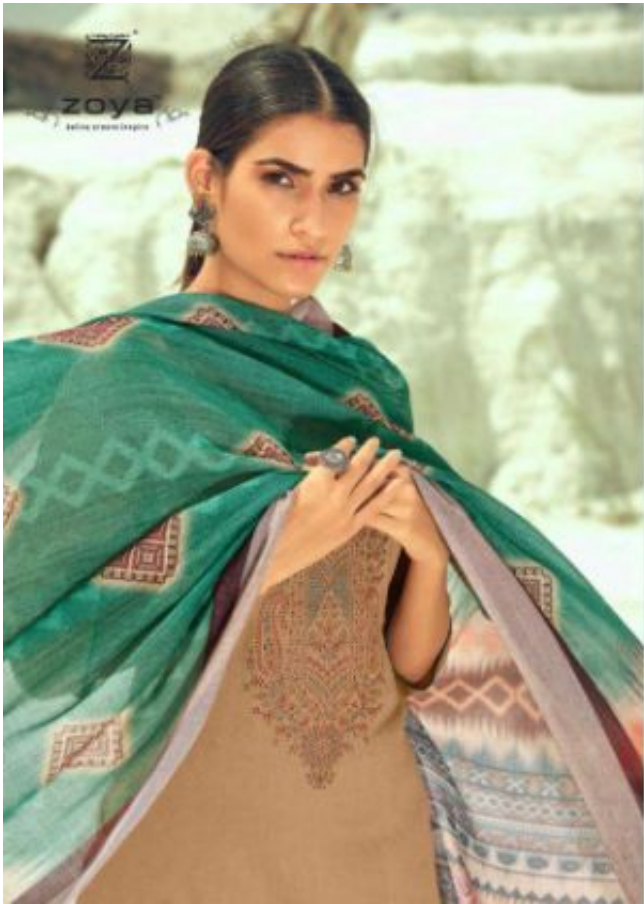


37003

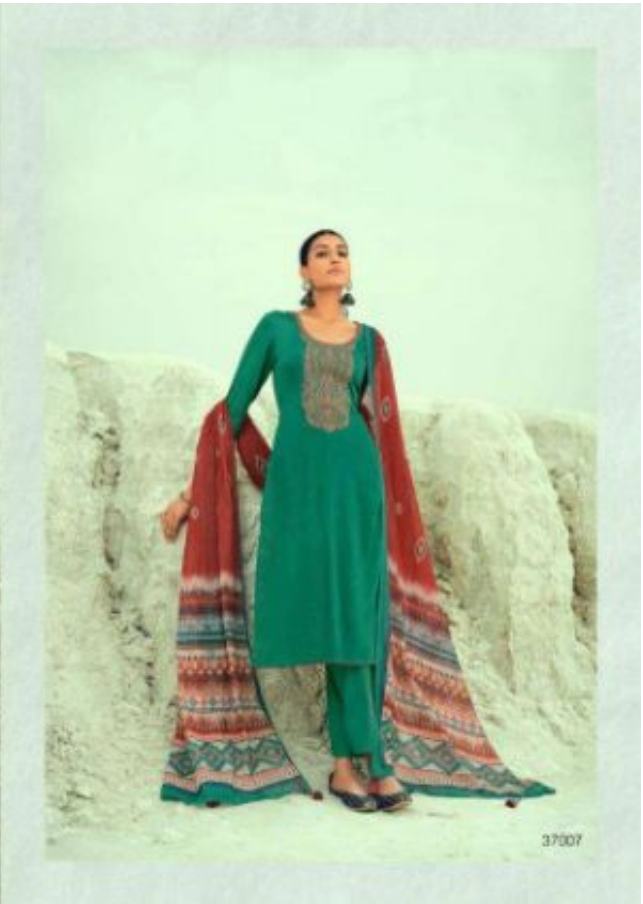
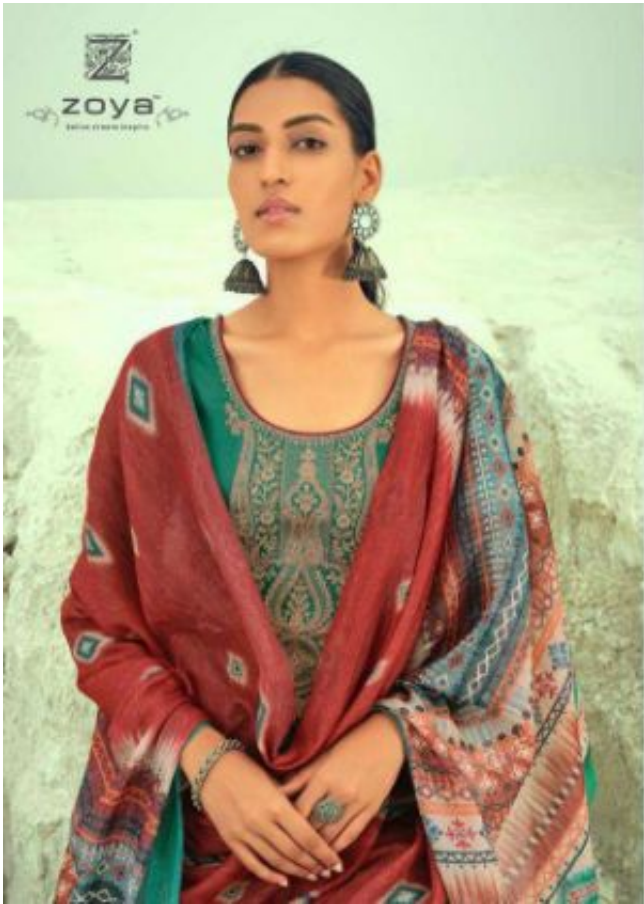


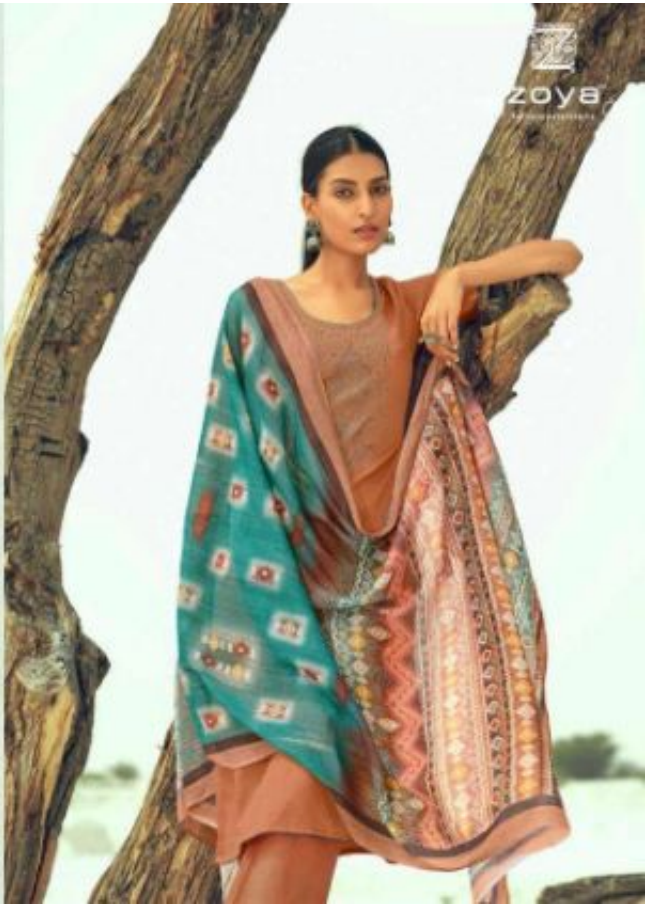






37006







37008



37009

AMIRA

COTTON SATIN EMBROIDERY WITH DIAMOND PRINT DUPATTA

PRODUCT DETAILS

DESIGN NO.
37001 TO 37009

TOP :

COTTON SATIN WITH EMBROIDERY

DUPATTA :

COTTON MUL WITH DIAMOND PRINT

BOTTOM :

PURE COTTON DYED

SET OF 9 DESIGNS

RISHIKA EMBROIDERY



zoyaTM
belive:create:inspire