

 bhkala®



❖ **BRIDES** ❖
VOL-1

 bhkala®



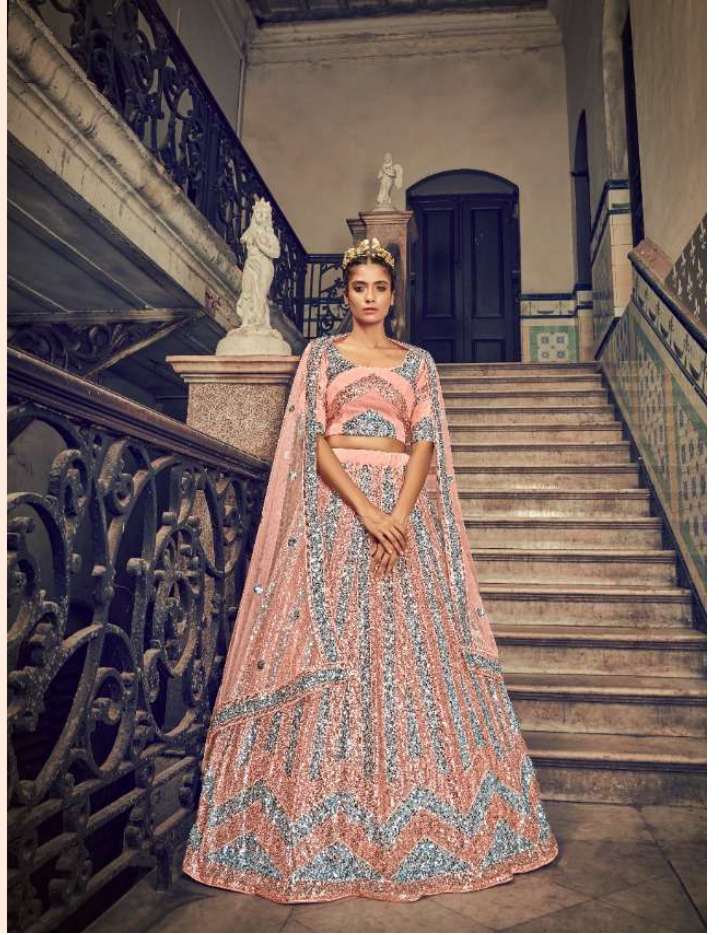
❖ **BRIDES** ❖
VOL-1

Ubhkala



TRADITION • WOMEN

D. NO. 1701



Swastika bhkala



CELEBRATE • IS STYLE
D.NO.1701



కళాభకలా

GLAMOUR • BEAUTY

D.NO. 1703





Swastika bhkala



GORGEOUS • LOOKS
D.NO. 1702



Swastika bhkala®

AMAZING • GRACE

D.NO.1702

Swastika bhkala



MODERN CLASSICS
D. NO. 1703





Abhikala

• Dream
of
JOY

Seize your happiness in every moment of life.

ॐ bhkala



NATURAL • BEAUTY

D. NO. 1705







Urbhkala



STYLISH • ELEGANCE
D. NO. 1705

BRIDES

VOL-1

bhkala



D.NO.1701



D.NO.1702



D.NO.1703



D.NO.1704



D.NO.1705



BRIDES

VOL-1

Design NO. (SKU)	Main Color	Lehenga Fabric	Choli Fabric	Dupatta Fabric	SIZE (SEMI-STITCHED)	Lehenga Work	Choli Work	Dupatta Work	Choli Length MTR	Lehenga Length INCH	Dupatta Length MTR	Weight
1701	Peach	NET	NET	NET	UPTO 42 BUST AND WAIST	SEQUINCE EMBROIDERED WORK	SEQUINCE EMBROIDERED WORK	SEQUINCE EMBROIDERED WORK	1	42	2.30	2 KG
1702	Black	NET	NET	NET	UPTO 42 BUST AND WAIST	SEQUINCE EMBROIDERED WORK	SEQUINCE EMBROIDERED WORK	SEQUINCE EMBROIDERED WORK	1	42	2.30	2 KG
1703	Grey	NET	NET	NET	UPTO 42 BUST AND WAIST	SEQUINCE EMBROIDERED WORK	SEQUINCE EMBROIDERED WORK	SEQUINCE EMBROIDERED WORK	1	42	2.30	2 KG
1704	Olive Green	NET	NET	NET	UPTO 42 BUST AND WAIST	SEQUINCE EMBROIDERED WORK	SEQUINCE EMBROIDERED WORK	SEQUINCE EMBROIDERED WORK	1	42	2.30	2 KG
1704	Turquoise Blue	NET	NET	NET	UPTO 42 BUST AND WAIST	SEQUINCE EMBROIDERED WORK	SEQUINCE EMBROIDERED WORK	SEQUINCE EMBROIDERED WORK	1	42	2.30	2 KG

THIS BOOK / CATALOGUE / LOGO / ARE PROTECTED UNDER COPYRIGHT ACT.

AN ILLEGAL/UNAUTHORIZED REPRINT, PUBLISHING, REPRODUCTION, DISTRIBUTION AND MODIFICATION OF ANY IMAGES, PHOTOGRAPHS AND PRODUCTS, TOTALLY OR IN PART, FOR ANY PURPOSE, REASON OR CAUSE IS STRICTLY PROHIBITED AND PUNISHABLE UNDER LAW.









