



1002





1002





1001

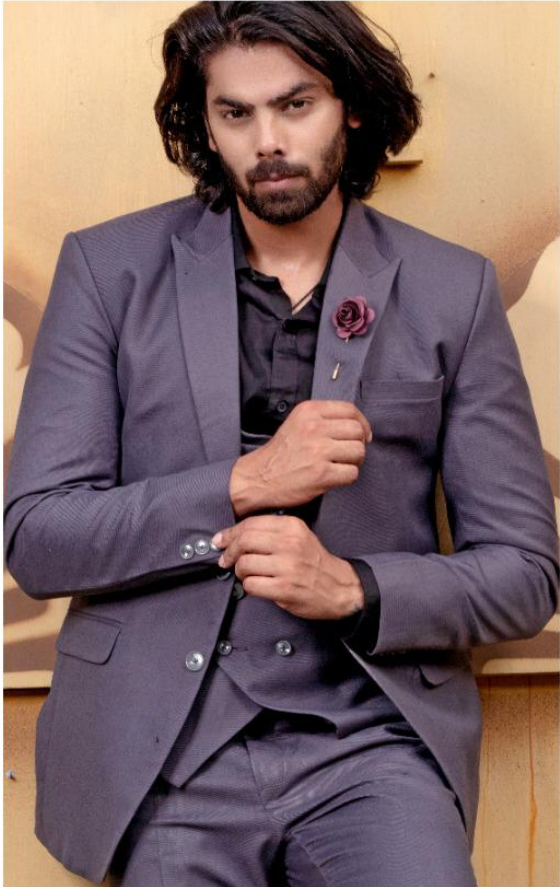


1004





1005



1003



1007



1008







1006





1010





1011



1009



1013



1012





1015



1016







1014





DESIGN NO.	ONLY SUIT	SUIT & PANT (02 pieces)	SUIT, PANT & WAISTCOAT (03 pieces)
1001	-	3150/-	-
1002	1850/-	2600/-	3500/-
1003	1750/-	2500/-	3400/-
1004	1850/-	2600/-	-
1005	1850/-	2600/-	3500/-
1006	1750/-	2500/-	3400/-
1007	1850/-	2600/-	3500/-
1008	1750/-	2500/-	3400/-
1009	1850/-	2600/-	3500/-
1010	1750/-	2500/-	3400/-
1011	1750/-	2500/-	3400/-
1012	-	3150/-	-
1013	1750/-	2500/-	3400/-
1014	1750/-	2500/-	3400/-
1015	1750/-	2500/-	3400/-
1016	1750/-	2500/-	3400/-
1017	1850/-	2600/-	3500/-

- 12% GST Extra Applicable On Prices.
- Fabric : Mens Suiting Fabric (67% Polyester & 33% Viscose)
- Chest Sizes : 36 to 46 (inches)
- Color Options Available On Bulk Orders.
- NOTE : 10% Extra Charge for Chest Size Above 42 inches.



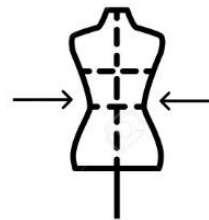
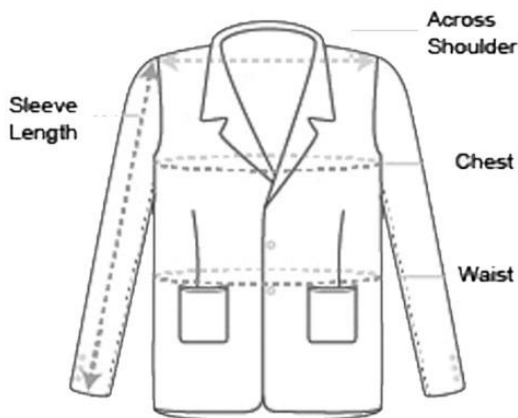
# SIZE CHART

INCHES

## MEN SUITS

SIZE	SLEEVE LENGTH	CHEST	SHOULDER	FRONT LENGTH	WAIST
34	24.5	34	16.5	27.5	33
36	24.5	36	16.5	28	34
38	25	38	17.5	29	36
40	25.5	40	18.5	30	38
42	25.5	42	19	30	40
44	26	44	19	31	44
46	26	46	20	31	46

### HOW TO MEASURE YOURSELF



STILL NOT SURE ABOUT YOUR PERFECT SIZE AND FIT?  
OUR ADVISORS CAN PROVIDE DETAILED  
INFORMATION FOR ANY OF OUR PRODUCT.

---



1017



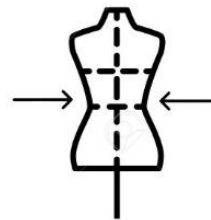
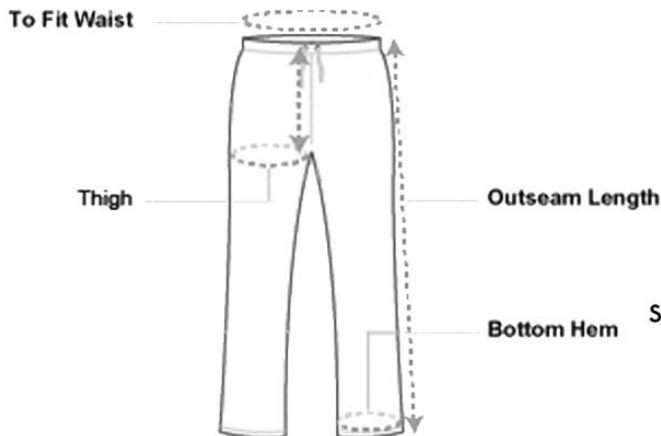
# SIZE CHART

INCHES

## PANTS /TROUSERS

SIZE	TO FIT WAIST	HIP	THIGH	BOTTOM HEM	OUTSEAM LENGTH
28	28-29	36	22	13	40
30	30-31	38	23	13	40
32	32-33	40	24	13	40
34	34-35	42	25	13.5	40
36	36-37	44	26	14	41
38	38-39	46	27	14.5	41
40	40-41	48	28	15	42

### HOW TO MEASURE YOURSELF



STILL NOT SURE ABOUT YOUR PERFECT SIZE AND FIT?  
OUR ADVISORS CAN PROVIDE DETAILED  
INFORMATION FOR ANY OF OUR PRODUCT.