



Modern india 





  
HILLS

D.NO.102





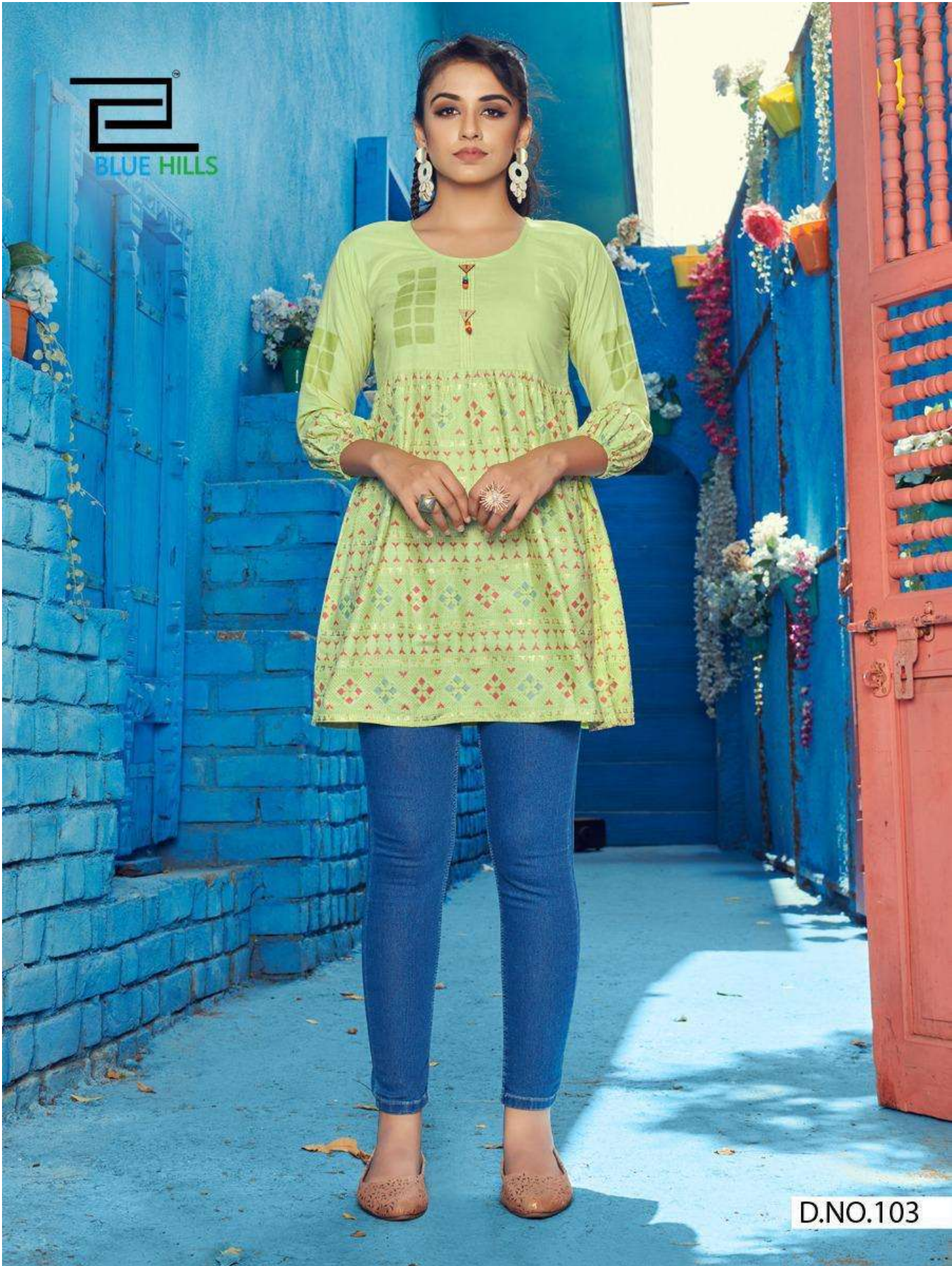
BLUE HILLS



D.NO.106



  
BLUE HILLS



D.NO.103

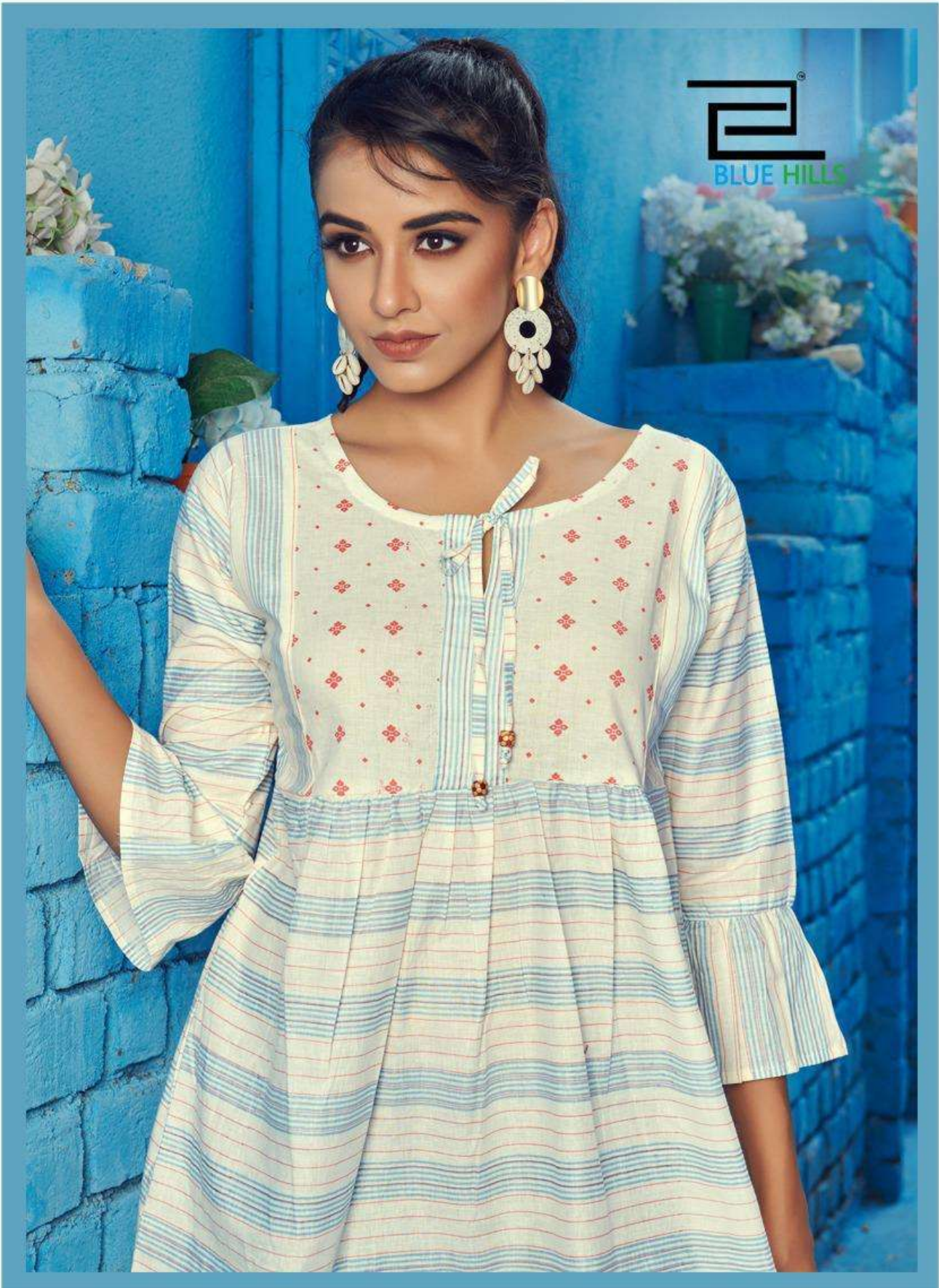


A woman with dark hair pulled back is standing in a blue-painted doorway. She is wearing a light pink tunic with intricate geometric patterns in darker pink and green, featuring a V-neckline with buttons and flared sleeves. She is also wearing blue denim jeans and dark green loafers. The background is a vibrant blue wall with a stone-like texture on the left and a smooth finish on the right. There are several potted plants and flowers, including white and pink blooms, hanging from the doorway and walls. In the top left corner, there is a logo consisting of a stylized 'E' shape above the text 'BLUE HILLS'.

BLUE HILLS

D.NO.104





  
BLUE HILLS





Modern india 





D.NO.105





D.NO.101

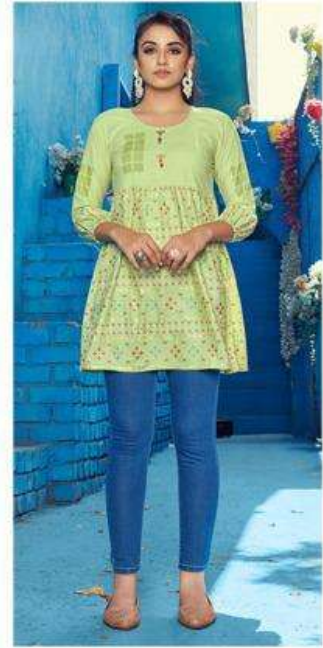




D.NO.101



D.NO.102



D.NO.103



D.NO.104



D.NO.105



D.NO.106



Modern india 