

Top - Georgette heavy embroidered
Inner Bottom - Santoon silk with patch
Dupatta - Nazneen heavy embroidered



SLEEVE

EMB FRONT

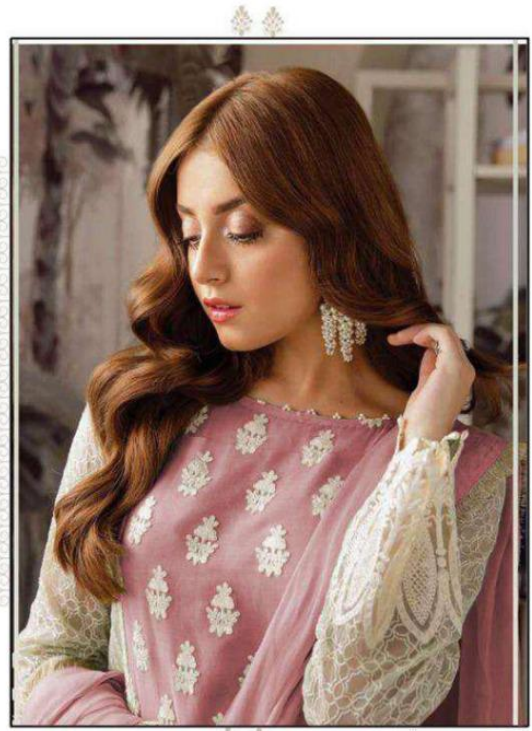
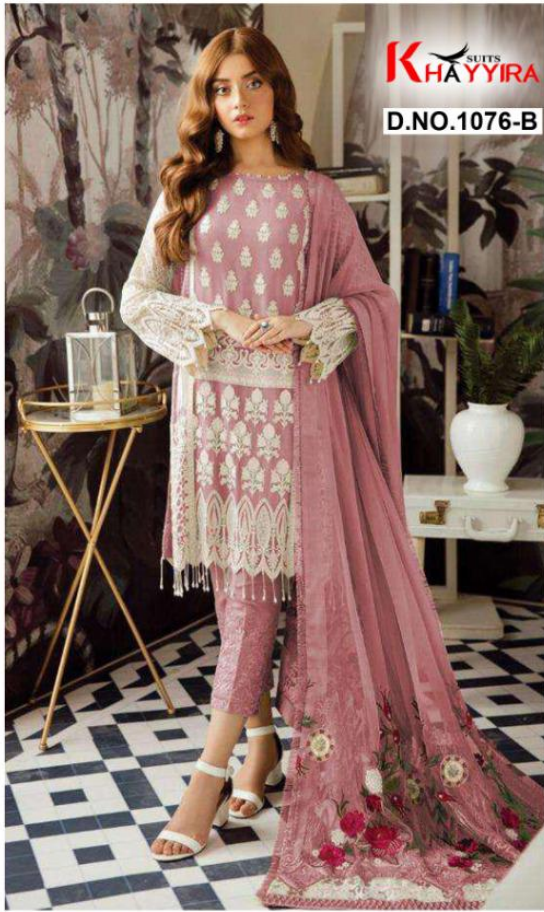
DUPATTA

PATCH

BOTTOM



The - Georgette heavy embroidered
Sleeve - Satin
Bottom - Satin with patch
Dupatta - Net with heavy embroidered



Top - Georgette heavy embroidered
Inner Bottom - Santoon silk with patch
Dupatta - Nazneen heavy embroidered



SLEEVE

EMB FRONT

DUPATTA

PATCH

BOTTOM



Top - Georgette heavy embroidered
New Bottom - Santon silk with patch
Dupatta - Nazneen heavy embroidered



**Top - Georgette heavy embroidered
Inner Bottom - Santoon silk with patch
Dupatta - Nazneen heavy embroidered**



**Top - Georgette heavy embroidered
Inner Bottom - Santoon silk with patch
Dupatta - Nazneen heavy embroidered**



**Top - Georgette heavy embroidered
Inner Bottom - Santoon silk with patch
Dupatta - Nazneen heavy embroidered**



SLEEVE

FRONT EMB

DUPATTA

PATCH

BOTTOM



Top - Georgette heavy embroidered
Bottom - Satin silk with patch
Dupatta - Nazreen heavy embroidered



SLEEVE

EMB FRONT

DUPATTA

PATCH

BOTTOM



heavy embroidered
sleeves with patch
heavy embroidered