



KHAYYIRA
SUITES



D.No.1019

Top - Georgette embroidered
Inner Bottom - Santoon with emb patch
Dupatta - Net heavy embroidered



K SUITS
HAYYIRA

D.NO.1050



Top - Georgette heavy embroidered
Inner Bottom - Santoon silk
Dupatta - Nazneen heavy embroidered



K SUITS
HAYYIRA

D.NO.1053-A



**Top - Georgette heavy embroidered
Inner Bottom - Santoon silk with emb patch
Dupatta - Net embroidered with lace**



KHAYYRA
D.NO.1053-C

Top - Georgette heavy embroidered
Inner Bottom - Santoon silk with emb patch
Dupatta - Net embroidered with lace





KHAYYIRA
SUITES



D.No.1019

Top - Georgette embroidered
Inner Bottom - Santoon with emb patch
Dupatta - Net heavy embroidered

FUCHSIA COLLECTION

Top embroidered

Sleeves



Bottom with patch

Dupatta embroidered

Daman lace

Khayyira Suits™



AZURE PN 1023



FUCHSIA COLLECTION

Top embroidered

Sleeves

Bottom with patch

Dupatta

Daman lace

Khayyira Suits™



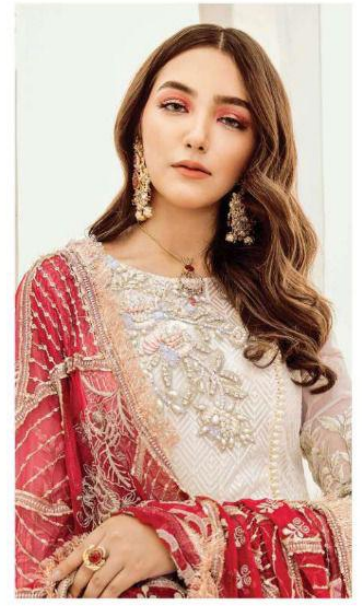
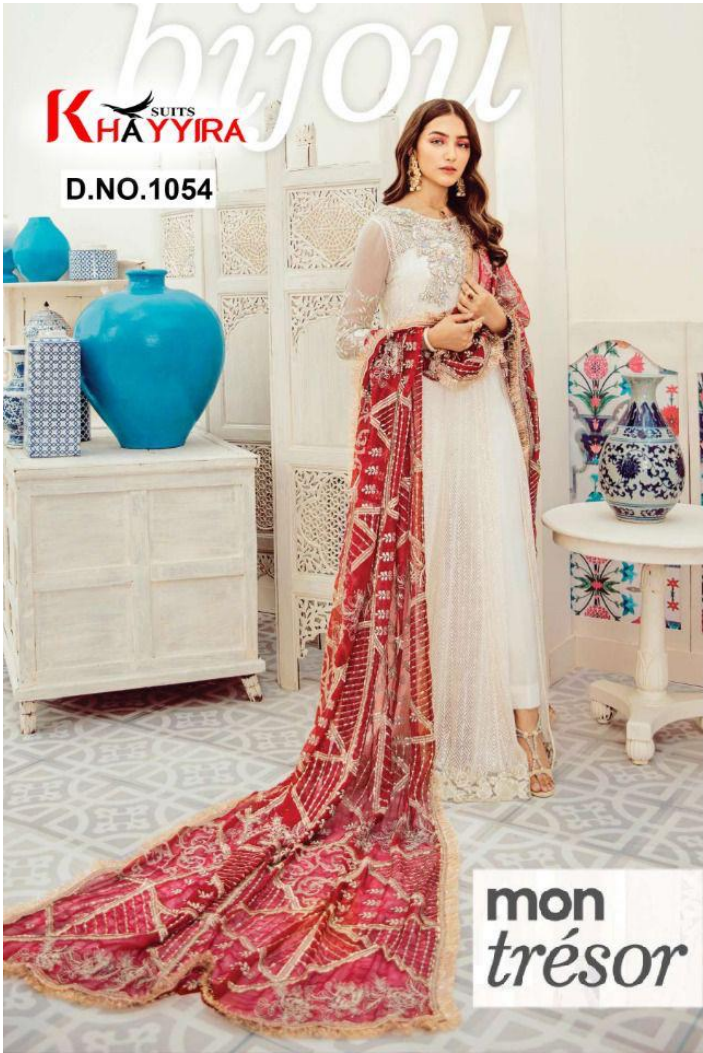


KHAYYIRA
D.NO.1050

Top - Organza heavy embroidered
Inner Button - Satin silk
Dupatta - Network heavy w. embroidered



KHAYYIRA MON TRESOR DN 1054

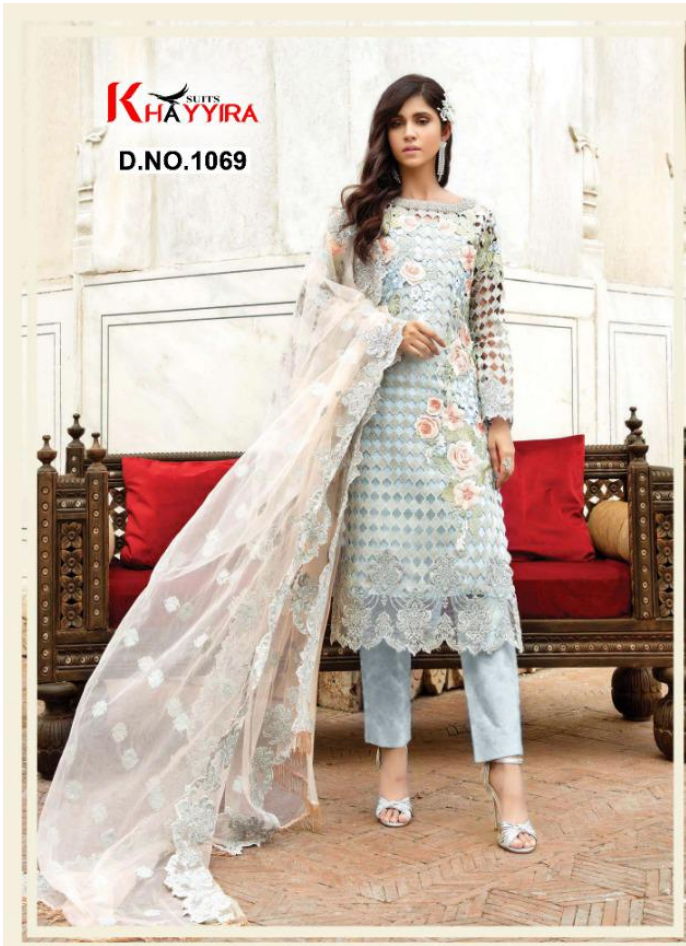


Top - Georgette heavy embroidered with neck emb patch semi stitched
Inner Bottom - Santoon silk
Dupatta - Nazneen heavy embroidered with four side readymade lace









**Top - Georgette heavy embroidered
Inner Bottom - Santoon Silk
Dupatta - Butterfly Net Heavy embroidered**





SLEEVE

FRONT EMB

DUPATTA

BOTTOM







TOP - FOX GEORGETTE HEAVY EMBROIDERED + ACCESSORIES
INNER - DULL SANTOON
BOTTOM - DULL SANTOON
DUPATTA - HEAVY NAZNEEN EMBROIDERED



TOP - FOX GEORGETTE HEAVY EMBROIDERED + ACCESSORIES
INNER - DULL SANTOON
BOTTOM - DULL SANTOON
DUPATTA - HEAVY NAZNEEN EMBROIDERED





- Top** - Butterfly Net Heavy embroidered
- Inner** - Santoon Silk
- Bottom** - Butterfly Net with Moti Work & Santoon Inner
- Dupatta** - Butterfly Net with Moti work



K SUITS
HAYYIRA™

D.NO.1053 H



**TOP - GEORGETTE HEAVY EMBROIDERED
INNER+BOTTOM - SHANTUN SILK WITH EMB. PATCH
DUPATTA - NET EMBROIDERED WITH LACE**



KHAYYIRA
Suits
D.NO.1088



TOP - FOX GEORGETTE EMBROIDERED
INNER - DULL SANTOON
BOTTOM - DULL SANTOON
DUPATTA - HEAVY NAZNEEN EMBROIDERED



TOP - BUTTERFLY NET HEAVY EMBROIDERED + STONE WORK
INNER- DULL SHANTOON
BOTTOM - DULL SHANTOON
DUPATTA - ORGANZA DIGITAL PRINT WITH EMBROIDRED



K SUITS
HAYYIRA

D.NO.1099





SLEEVE

TOP EMB

BOTTOM EMB

DUPATTA



K SUITS
HAYYIRA™

D.NO.1090 D



TOP - BUTTERFLY NET HEAVY EMBROIDERED + STONE WORK
INNER- DULL SHANTOON
BOTTOM - BUTTERFLY NET HEAVY EMBROIDERED
DUPATTA - BUTTERFLY NET RIBIT MOTI WORK





K SUITS
HAYYIRA™

D.NO.1090 A



TOP - BUTTERFLY NET HEAVY EMBROIDERED + STONE WORK
INNER- DULL SHANTOON
BOTTOM - BUTTERFLY NET HEAVY EMBROIDERED
DUPATTA - BUTTERFLY NET RIBIT MOTI WORK

ZARQASH
A BRAND BY **KAYYRA**

D.NO.2010



TOP : CAMBRIC COTTON SELF EMBROIDRED

BOTTOM : PC DYED

DUPATTA : HEAVY NAZNEEN EMBROIDRED





ZARQASH[®]
A BRAND BY **KINARA**

ZAHA

D.NO.2007

EMBROIDRED SHIRT FRONT (JAM)
DYED SHIRT BACK (JAM)
EMBROIDRED SHIRT SLEEVES (JAM)
DYED TROUSER (PC)
DIGITAL PRINTED
DUPATTA (CHIFFON)

CARE INSTRUCTIONS



- DRY CLEAN RECOMMENDED
- DO NOT USE ANY TYPE OF BLEACH OR STAIN REMOVING CHEMICAL
- BEFORE STITCHING, FABRIC SHOULD BE SOAKED IN WATER
- WASH & SOAK COLOURED & WHITE FABRICS SEPERATELY
- DO NOT OVER EXPOSE DAMP FABRIC TO STRONG SUNLIGHT
- IRON AT MODERATE TEMPERATURE

K SUITS
HAYYIRA™

D.NO.1090 C



TOP - BUTTERFLY NET HEAVY EMBROIDERED + STONE WORK
INNER- DULL SHANTOON
BOTTOM - BUTTERFLY NET HEAVY EMBROIDERED
DUPATTA - BUTTERFLY NET RIBIT MOTI WORK



ZARQASH[®]
A BRAND BY **KUKYUVA**

ZAHA

D.NO.2006

- EMBROIDRED SHIRT FRONT (JAM)**
- DYED SHIRT BACK (JAM)**
- EMBROIDRED SHIRT SLEEVES (JAM)**
- DYED TROUSER (PC)**
- DYED DUPATTA (CHANDERI)**

CARE INSTRUCTIONS



- DRY CLEAN RECOMMENDED**
- DO NOT USE ANY TYPE OF BLEACH OR STAIN REMOVING CHEMICAL**
- BEFORE STITCHING, FABRIC SHOULD BE SOAKED IN WATER**
- WASH & SOAK COLOURED & WHITE FABRICS SEPERATELY**
- DO NOT OVER EXPOSE DAMP FABRIC TO STRONG SUNLIGHT**
- IRON AT MODERATE TEMPERATURE**





K SUITS
HAYYIRA™

D.NO.2012 H



TOP - HEAVY GEORGETTE EMBROIDRED WITH HAND WORK & READYMADE LACE
INNER+BOTTOM - HEAVY SHANTOON SILK
DUPATTA - HEAVY NAZNIN EMBROIDRED

ZARQASH[®]
A BRAND BY Kalyan

D.NO.2011



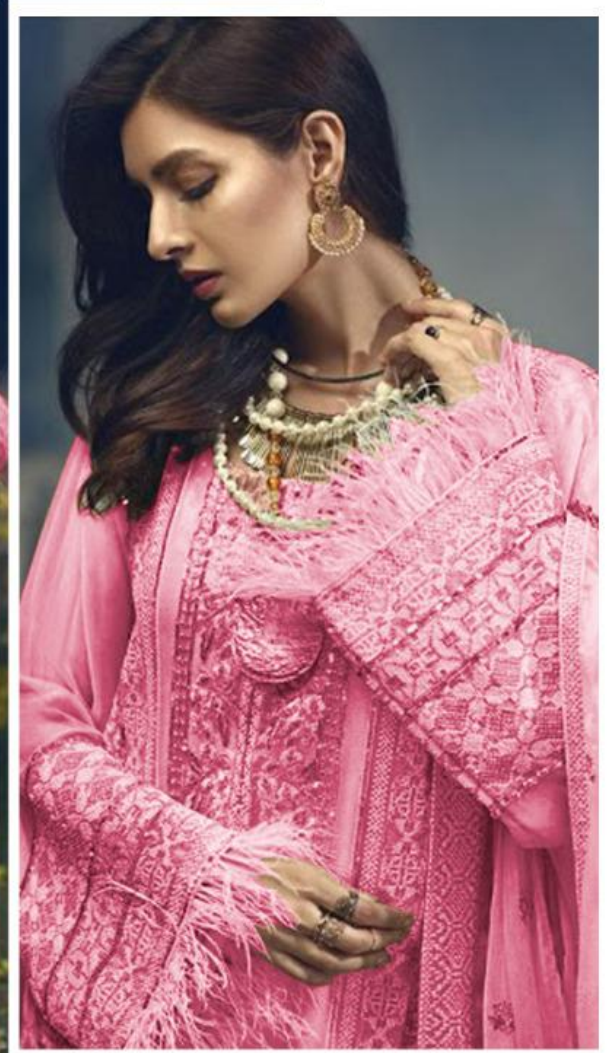
TOP : CAMBRIC COTTON SELF EMBROIDRED

BOTTOM : PC DYED

DUPATTA : HEAVY NAZNEEN EMBROIDRED

K SUITS
HAYYIRA™

D.NO.2012 G



TOP - HEAVY GEORGETTE EMBROIDRED WITH HAND WORK & READYMADE LACE
INNER+BOTTOM - HEAVY SHANTOON SILK
DUPATTA - HEAVY NAZNIN EMBROIDRED



ZARQASH[®]
A BRAND BY **KINARA**

ZAHA

D.NO.2005

EMBROIDRED SHIRT FRONT (JAM)
DYED SHIRT BACK (JAM)
EMBROIDRED SHIRT SLEEVES (JAM)
EMBROIDRED PATCH NECK (TISSUE)
DYED TROUSER (PC)
DIGITAL PRINTED
DUPATTA (CHIFFON)

CARE INSTRUCTIONS



- DRY CLEAN RECOMMENDED
- DO NOT USE ANY TYPE OF BLEACH OR STAIN REMOVING CHEMICAL
- BEFORE STITCHING, FABRIC SHOULD BE SOAKED IN WATER
- WASH & SOAK COLOURED & WHITE FABRICS SEPERATELY
- DO NOT OVER EXPOSE DAMP FABRIC TO STRONG SUNLIGHT
- IRON AT MODERATE TEMPERATURE

D.NO.	RATE	D.NO.	RATE	D.NO.	RATE	D.NO.	RATE	D.NO.	RATE	D.NO.	RATE
101	1199	1020B	1199	1046	1199	1053B	1199	1063B	1199	1070D	1199
102	1199	1020D	1199	1047	1199	1053C	1199	1063C	1199	1071	1199
102B	1199	1022	1199	1048A	1199	1053D	1199	1063D	1199	1072	1199
102C	1199	1023	1199	1048B	1199	1053E	1199	1064	1199	1073	1199
102D	1199	1024A	1199	1048C	1199	1054	1199	1064B	1199	1074	1199
103	1199	1024B	1199	1048D	1199	1055	1199	1064C	1199	1075A	1199
1001	1199	1026	1199	1048E	1199	1056	1199	1064D	1199	1075B	1199
1002	1199	1028	1199	1048F	1199	1057	1199	1065	1199	1075C	1199
1004A	1199	1029	1199	1048G	1199	1058	1199	1065B	1199	1075D	1199
1004B	1199	1031	1199	1048H	1199	1059	1199	1065C	1199	1076A	1199
1005	1199	1032	1199	1048I	1199	1060A	1199	1065D	1199	1076B	1199
1006	1199	1034	1199	1048J	1199	1060B	1199	1066	1199	1076C	1199
1009	1199	1035	1199	1048K	1199	1060C	1199	1067	1199	1076D	1199
1010D	1199	1037	1199	1048L	1199	1060D	1199	1068A	1199	1076E	1199
1010E	1199	1039	1199	1048M	1199	1061A	1199	1068B	1199	1076F	1199
1010G	1199	1040	1199	1048N	1199	1061B	1199	1068C	1199	1077A	1150
1016	1199	1041	1249	1049	1199	1061C	1199	1068D	1199	1077B	1150
1018	1199	1042	1249	1050	1199	1061D	1199	1069	1199	1077C	1150
1019	1199	1043	1249	1051	1199	1061E	1199	1070A	1199	1077D	1150
1020A	1199	1044	1249	1052	1199	1062A	1199	1070B	1199	1078	1150
1020B	1199	1045	1199	1053A	1199	1063	1199	1070C	1199	1079	1150
										1080A	1150
										1080B	1150
										1080C	1150
										1081	1150
										1082A	1150
										1082B	1150
										1084A	1450
										1084B	1450
										1084C	1450
										1084D	1450
										1085	1499
										1086	1299
										1087	1299
										1088	1299
										1089	1299
										1090	1199
										1091	1299
										1092	1299
										1093	1299
										1094	1299
										1095	1299

K SUITS
HAYYIRA

Top - Georgette embroidered
Inner Bottom - Santoon with emb patch
Dupatta - Muslin digital printed



AZURE

D.NO.
1023





KHAYYIRA SUITS *BRA*

TOP - GEORGETTE HEAVY EMBROIDERED WITH LACE

INNER BOTTOM - DULL SANTOON

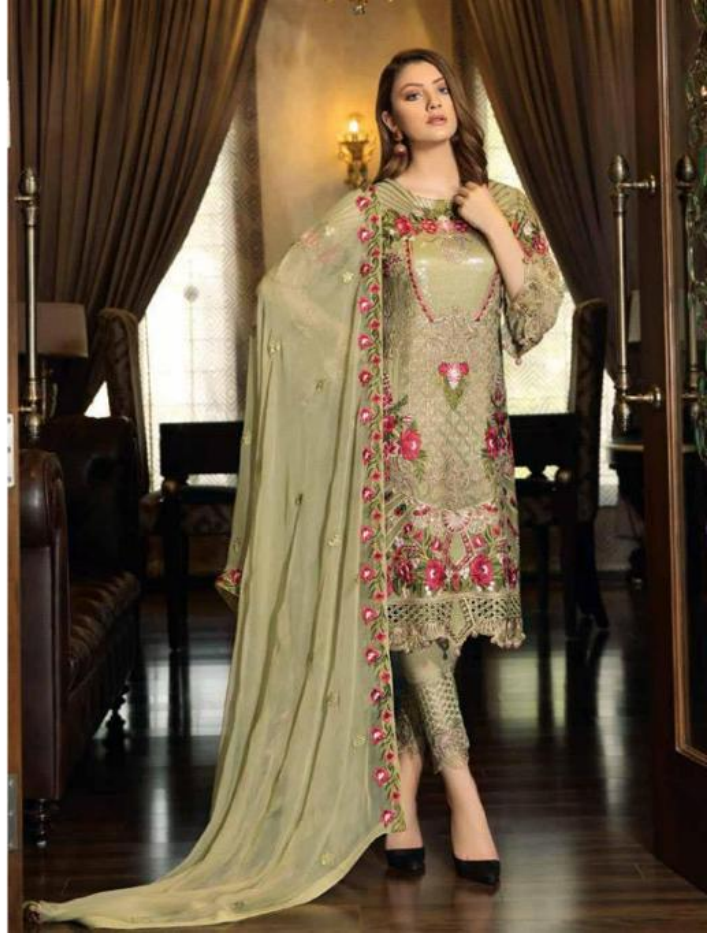
DUPATTA - NAZNEEN HEAVY EMBROIDERED WITH LACE

K SUITS
HAYYIRA



D.No.1018

Top - Georgette embroidered
Inner Bottom - Santoon with emb patch
Dupatta - Nazneen embroidered





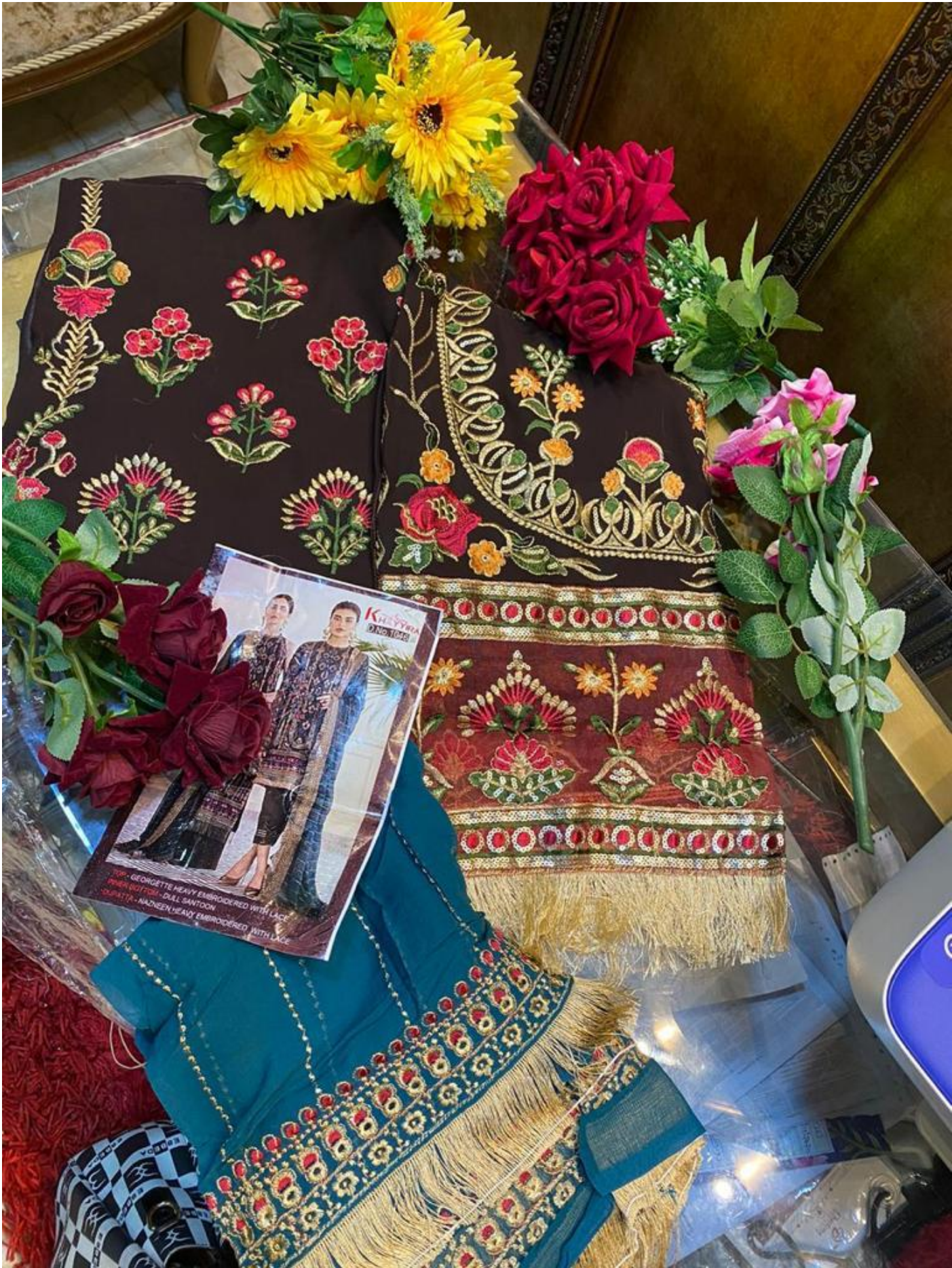
Top - Georgette heavy embroidered
Inner Bottom - Santoon silk with emb patch
Dupatta - Net embroidered with lace

K SUITS
HAYYIRA

D.NO.1053-C



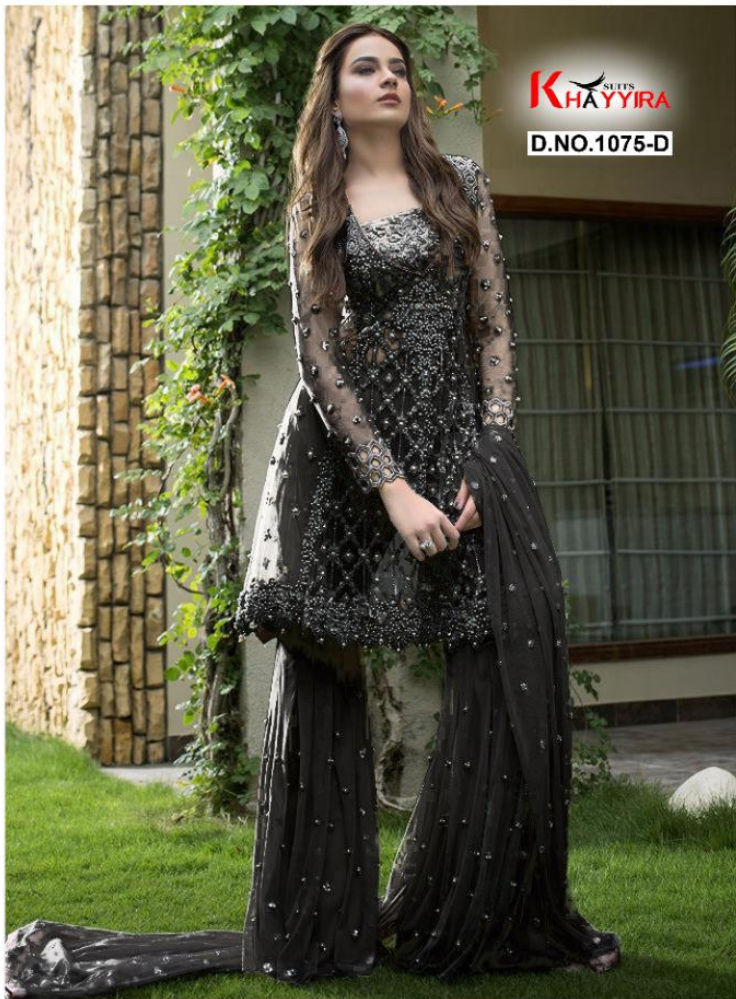
**Top - Georgette heavy embroidered
Inner Bottom - Santoon silk with emb patch
Dupatta - Net embroidered with lace**





Top - Butterfly Net Heavy embroidered
Inner - Santoon Silk
Bottom - Butterfly Net with Moti Work & Santoon Inner
Dupatta - Butterfly Net with Moti work





Top - Butterfly Net Heavy embroidered
Inner - Santoon Silk
Bottom - Butterfly Net with Moti Work & Santoon Inner
Dupatta - Butterfly Net with Moti work



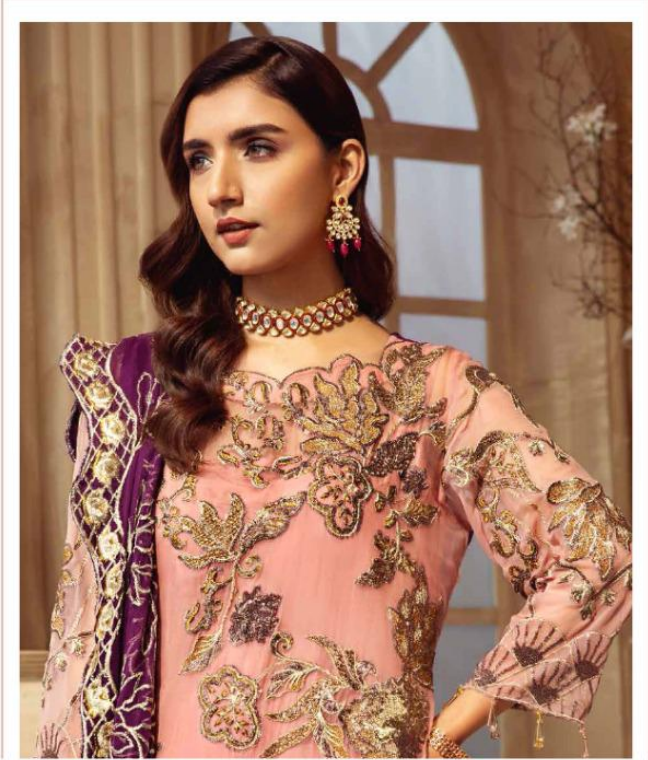
SLEEVE

FRONT EMB

DUPATTA

BOTTOM

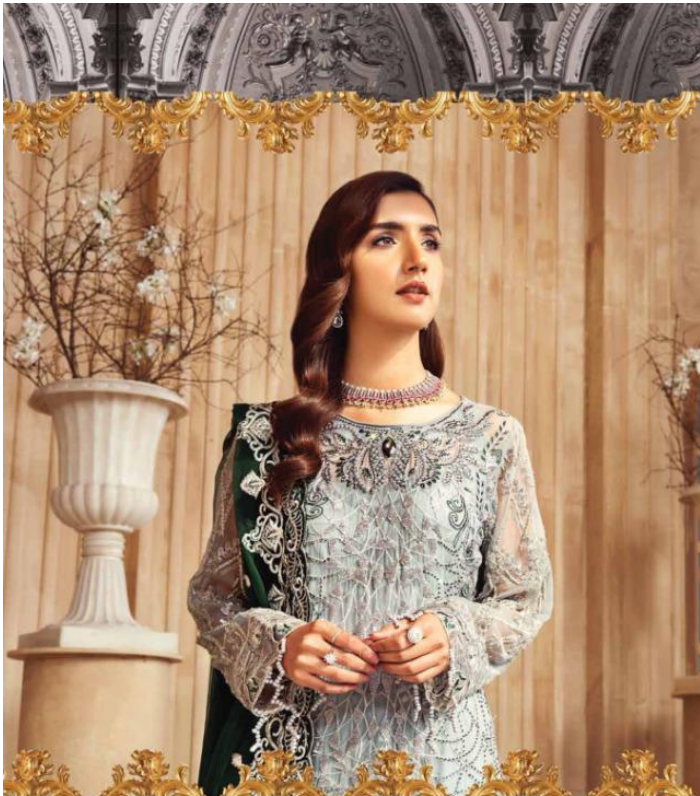




TOP - FOX GEORGETTE HEAVY EMBROIDERED + ACCESSORIES
INNER - DULL SANTOON
BOTTOM - DULL SANTOON + PATCH EMBROIDERED
DUPATTA - HEAVY NAZNEEN EMBROIDERED

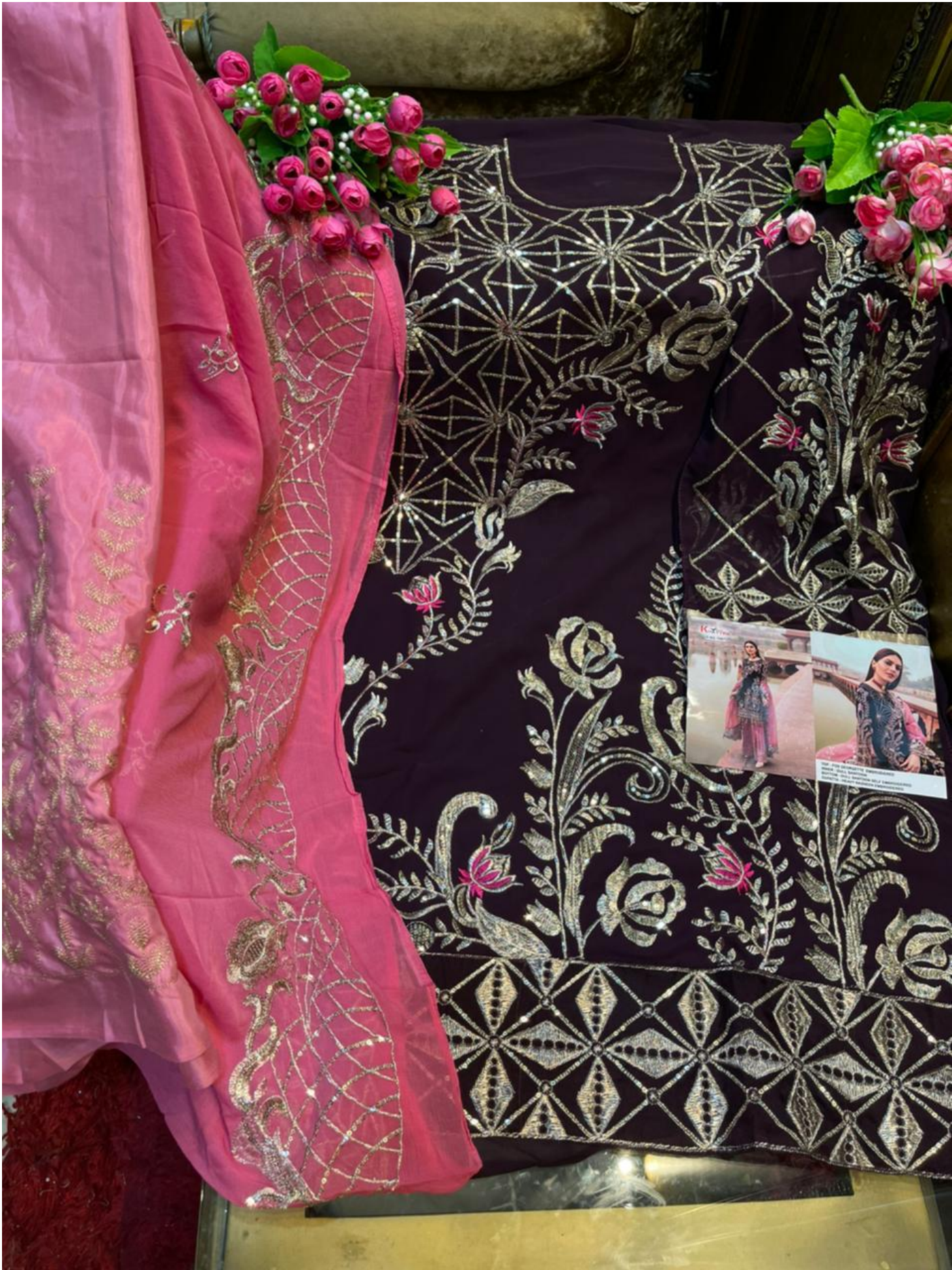






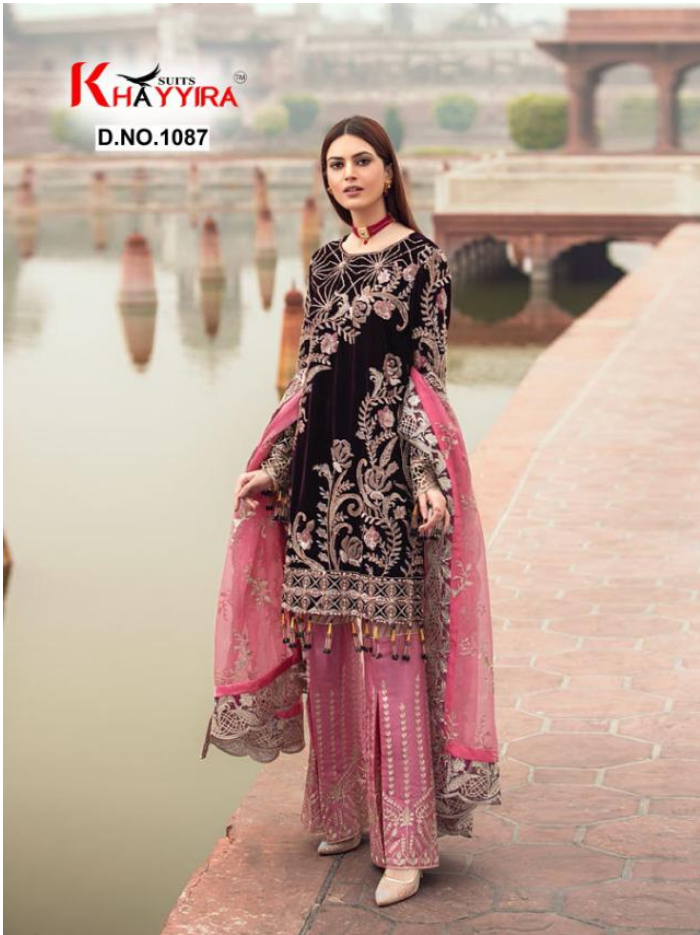
TOP - FOX GEORGETTE HEAVY EMBROIDERED + ACCESSORIES
INNER - DULL SANTOON
BOTTOM - DULL SANTOON
DUPATTA - HEAVY NAZNEEN EMBROIDERED





KHAYYIRA SUITS

D.NO.1087



TOP - FOX GEORGETTE EMBROIDERED
INNER - DULL SANTOON
BOTTOM - DULL SANTOON SELF EMBROIDERED
DUPATTA - HEAVY NAZNEEN EMBROIDERED





K SUITS
HAYYIRA™

D.NO.2000 A



Top - Butterfly net embroidered
T/B Inner - Heavy santoon silk
Bottom - Butterfly net moti work
Dupatta - Butterfly net embroidered



ZARQASH[®]
A BRAND BY **KUKYUS**

ZAHA

D.NO.2004

EMBROIDRED SHIRT FRONT (JAM)
DYED SHIRT BACK (JAM)
EMBROIDRED SHIRT SLEEVES (JAM)
DYED TROUSER (PC)
EMBROIDRED PATCH
BOTTOM (TISSUE)
DIGITAL PRINTED
DUPATTA (CHIFFON)

CARE INSTRUCTIONS



- DRY CLEAN RECOMMENDED
- DO NOT USE ANY TYPE OF BLEACH OR STAIN REMOVING CHEMICAL
- BEFORE STITCHING, FABRIC SHOULD BE SOAKED IN WATER
- WASH & SOAK COLOURED & WHITE FABRICS SEPERATELY
- DO NOT OVER EXPOSE DAMP FABRIC TO STRONG SUNLIGHT
- IRON AT MODERATE TEMPERATURE





ZARQASH
A BRAND BY **K.A. Vira**

D.NO.2008



TOP : CAMBRIC COTTON SELF EMBROIDRED

BOTTOM : PC DYED

DUPATTA : HEAVY NAZNEEN EMBROIDRED





ZARQASH[®]
A BRAND BY **Kaayneer**

D.NO.2009



TOP : CAMBRIC COTTON SELF EMBROIDRED

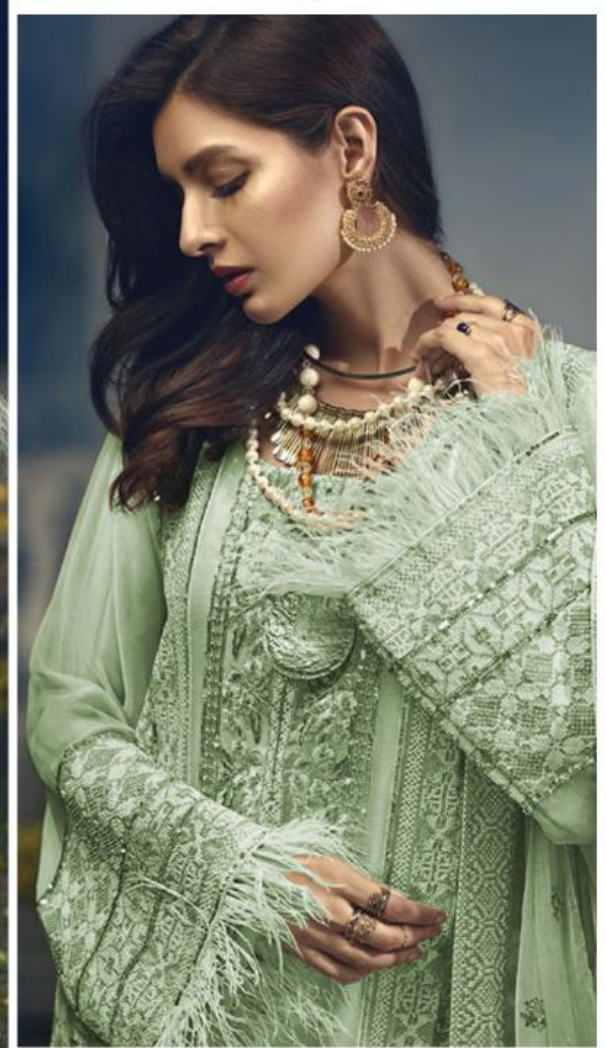
BOTTOM : PC DYED

DUPATTA : HEAVY NAZNEEN EMBROIDRED



K SUITS
HAYYIRA™

D.NO.2012 B



TOP - HEAVY GEORGETTE EMBROIDRED WITH HAND WORK & READYMADE LACE
INNER+BOTTOM - HEAVY SHANTOON SILK
DUPATTA - HEAVY NAZNIN EMBROIDRED



D.NO.2012 B
TOP - HEAVY GEOMETRIC EMBROIDERED WITH HARD WORK & READYMADE LACE
INNER-BOTTOM - HEAVY SHANTOON SILK
DUPATTA - HEAVY NAZKIN EMBROIDERED

K SUITS
HAYYIRA™

D.NO.2012 A



TOP - HEAVY GEORGETTE EMBROIDRED WITH HAND WORK & READYMADE LACE
INNER+BOTTOM - HEAVY SHANTOON SILK
DUPATTA - HEAVY NAZNIN EMBROIDRED