

SENHORA[®]

REFRESHES IT'S

DRESSES WITH BOLD DESIGN



5001



FABRICS MADE

IT COOL AND NOTICEABLE





SENHORA[®]

5001





SENHORA[®]



FEMININE LOOK



A GLIMPSE OF RADIANCE AND A DEFINED
COMPOSURE IS WHAT CONSTITUTES
TRUE FEMININE LOOK.



SENHORA[®]

5004





ROYAL ELEGANCE

THE GORGEOUS COMBINATION OF GEOMETRICAL DESIGN
WITH YOUNG CHARMING COLOURS..





SENHORA

5004



A TREND SETTER DESIGN THAT BRINGS OUT THE BEST IN YOU..





SENHORA

5003





CELEBRATE IN STYLE

THE PERFECT CHOICE FOR THOSE WHO NEED A BALANCE BETWEEN
CASUAL AND HEAVY LOOK..



SENHORA®

5003



GRACEFUL DESIGN



A GRACEFUL DESIGN THAT MAKES U LOOK A COMPLETE WOMAN...





SENHORA®

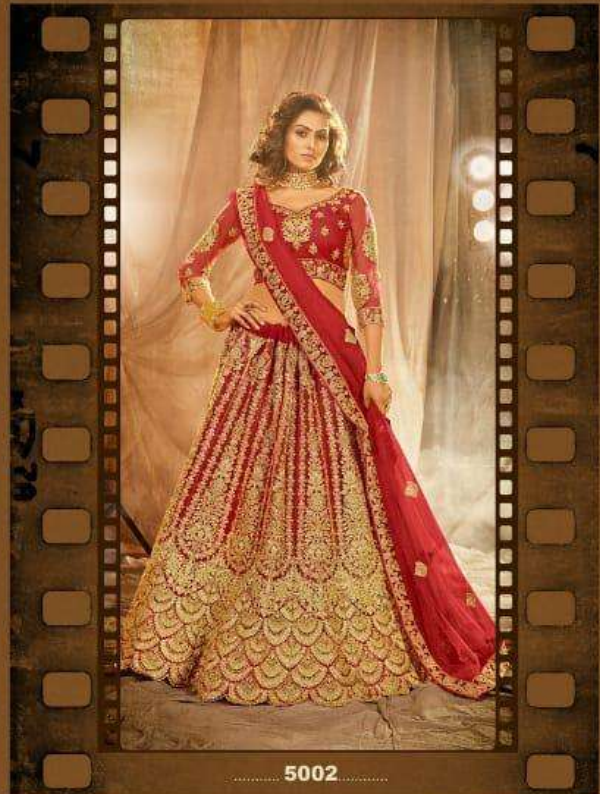
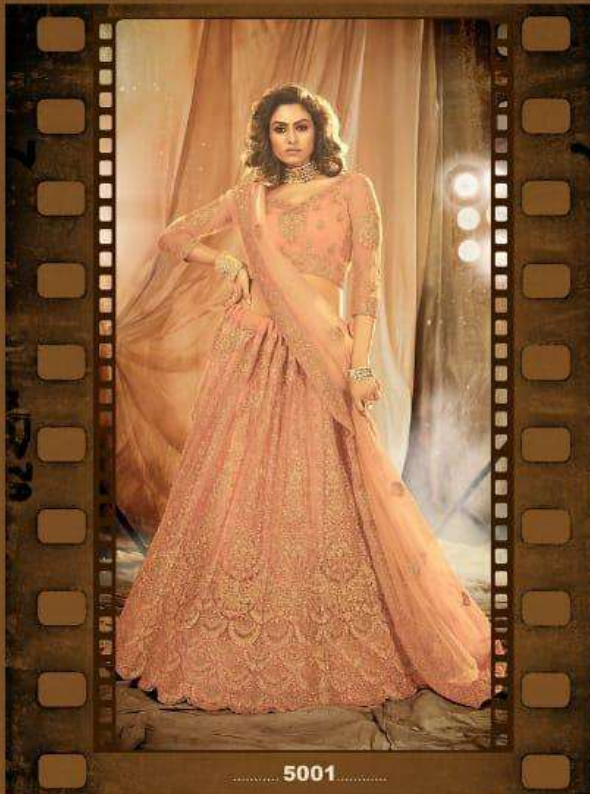
5002

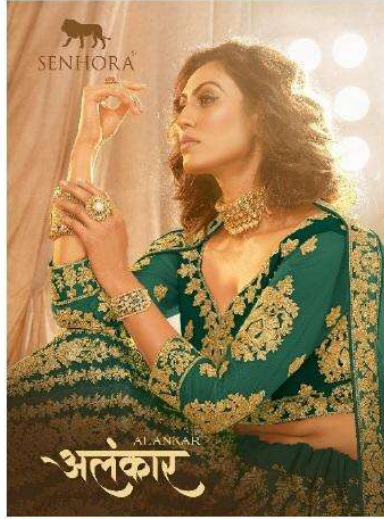




SENHORA®

5002





D.NO	LEHENGA FABRICS	BLOUSE FABRICS	DUPATTA FABRICS	DESCRIPTION	SIZE	RATE
5001	Net With Silk Satin 2 Layer Inner With Heavy Quality Can-Can	Net With Silk Inner	Net (Cut 2.40 mtr)	A Stunning Lehenga With Beautiful Cording Embroidery Blouse, Heavy Dupatta And Heavy Stonework Embellished, Designed Specially For Wedding Season.	Blouse Unstiched And Lehenga Semi Stitched	5395/-
5002	Net With Silk Satin 2 Layer Inner With Heavy Quality Can-Can	Net With Silk Inner	Net (Cut 2.40 mtr)	A Stunning Lehenga With Beautiful Cording Embroidery Blouse, Heavy Dupatta And Heavy Stonework Embellished, Designed Specially For Wedding Season.	Blouse Unstiched And Lehenga Semi Stitched	5395/-
5003	Net With Silk Satin 2 Layer Inner With Heavy Quality Can-Can	Net With Silk Inner	Net (Cut 2.40 mtr)	A Stunning Lehenga With Beautiful Cording Embroidery Blouse, Heavy Dupatta And Heavy Stonework Embellished, Designed Specially For Wedding Season.	Blouse Unstiched And Lehenga Semi Stitched	5395/-
5004	Net With Silk Satin 2 Layer Inner With Heavy Quality Can-Can	Net With Silk Inner	Net (Cut 2.40 mtr)	A Stunning Lehenga With Beautiful Cording Embroidery Blouse, Heavy Dupatta And Heavy Stonework Embellished, Designed Specially For Wedding Season.	Blouse Unstiched And Lehenga Semi Stitched	5395/-

GST – 12% EXTRA