

Bela FASHION  
1873





Bela FASHION  
1873





Bela FASHION  
1872



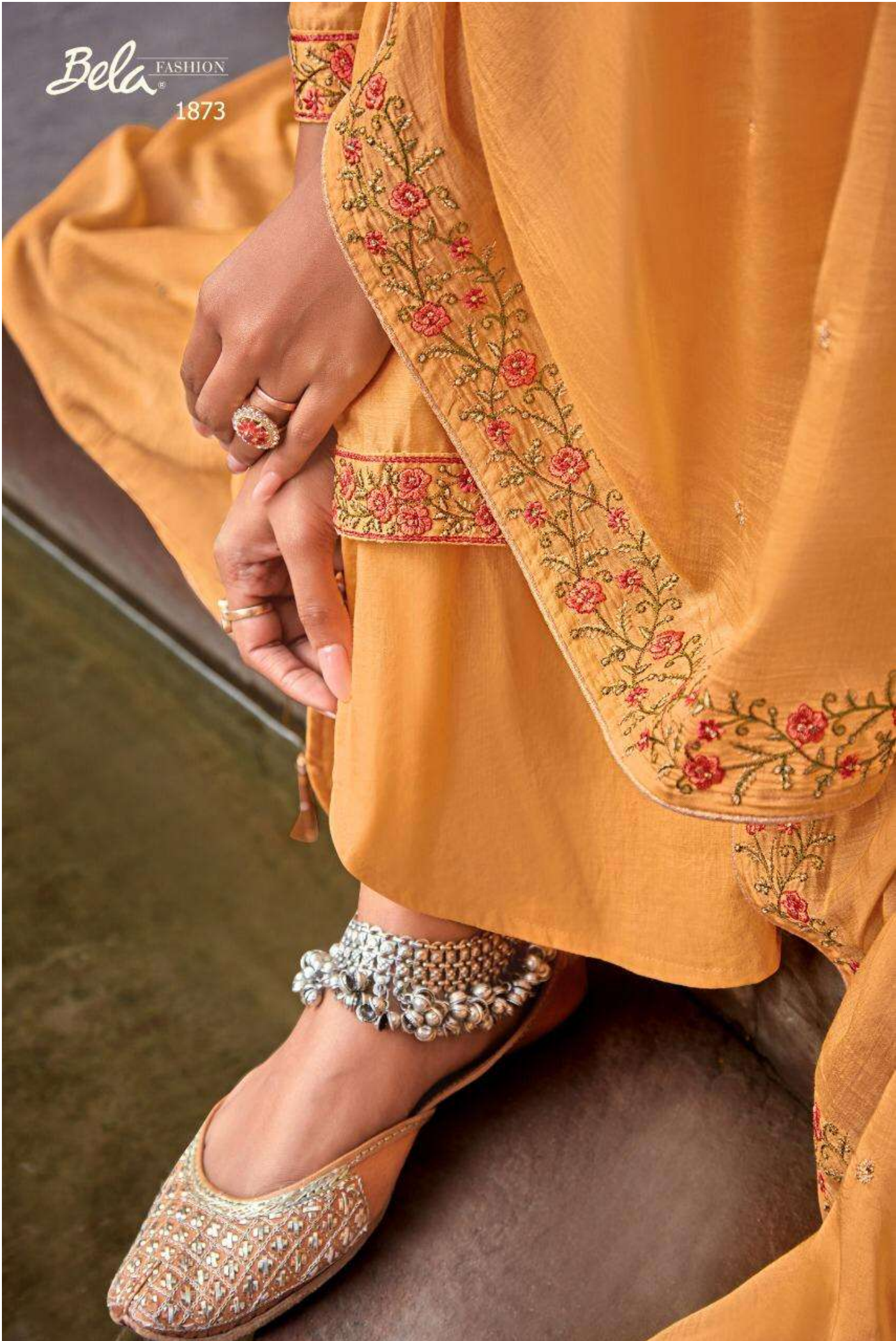


Bela FASHION  
1872





Bela FASHION  
1873



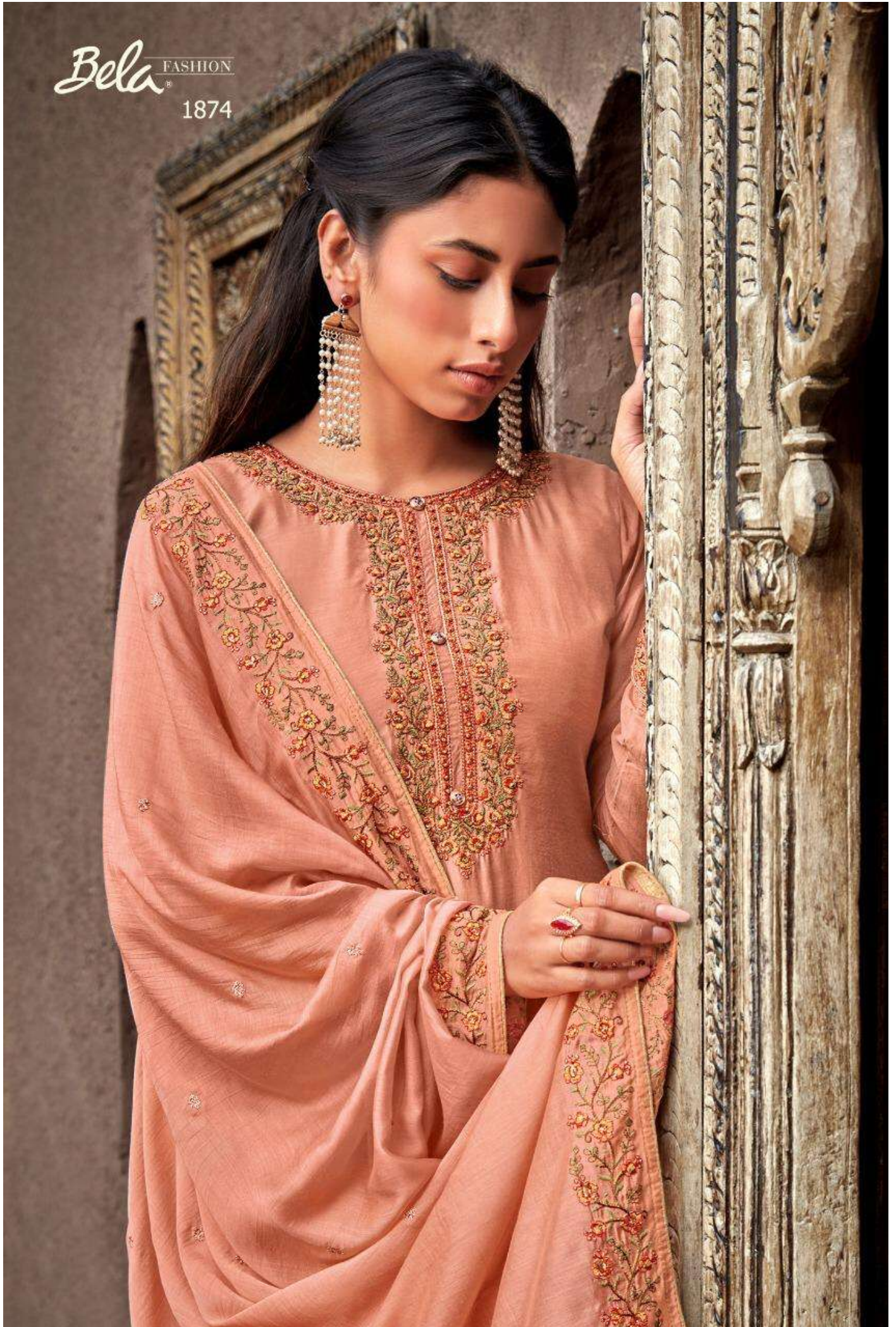


Bela FASHION  
1874





Bela FASHION  
1874





Bela FASHION  
1875





Bela FASHION  
1875





*Bela* FASHION  
1877





Bela FASHION

1876





Bela<sup>®</sup> FASHION

1876





Bela FASHION  
1878





*Bela* FASHION  
1877





Bela FASHION  
1878





Bela<sup>®</sup> FASHION  
1879





Bela FASHION  
1879







1872



1873



1874



1878



1879



1880



Bela FASHION  
1880





Bela FASHION

1880







1875



1876



1877

*Bela* FASHION  
*ultimate in fashion*  
ZIBA





PRESENTING TO YOU NEW CATALOGUE

# ZIBA

FROM BELA FASHION

## PRODUCT DETAILS

< TOP >

COTTON SILK WITH HAND WORK

< BOTTOM >

SUPERIOR COTTON

< DUPATTA >

30 X 60 MODAL

*Bela* FASHION<sup>®</sup>



# ZIBA

\*\*\*\*\*

Design Number	Catalogue Name	FABRIC DETAIL	PRICE
1872	ZIBA	Top - Cotton Silk With Hand Work Bottom - Superior Cotton Dupatta - 30 x 60 Modal	1710/-
1873	ZIBA	Top - Cotton Silk With Hand Work Bottom - Superior Cotton Dupatta - 30 x 60 Modal	1710/-
1874	ZIBA	Top - Cotton Silk With Hand Work Bottom - Superior Cotton Dupatta - 30 x 60 Modal	1710/-
1875	ZIBA	Top - Cotton Silk With Hand Work Bottom - Superior Cotton Dupatta - 30 x 60 Modal	1710/-
1876	ZIBA	Top - Cotton Silk With Hand Work Bottom - Superior Cotton Dupatta - 30 x 60 Modal	1710/-
1877	ZIBA	Top - Cotton Silk With Hand Work Bottom - Superior Cotton Dupatta - 30 x 60 Modal	1710/-
1878	ZIBA	Top - Cotton Silk With Hand Work Bottom - Superior Cotton Dupatta - 30 x 60 Modal	1710/-
1879	ZIBA	Top - Cotton Silk With Hand Work Bottom - Superior Cotton Dupatta - 30 x 60 Modal	1710/-
1880	ZIBA	Top - Cotton Silk With Hand Work Bottom - Superior Cotton Dupatta - 30 x 60 Modal	1710/-