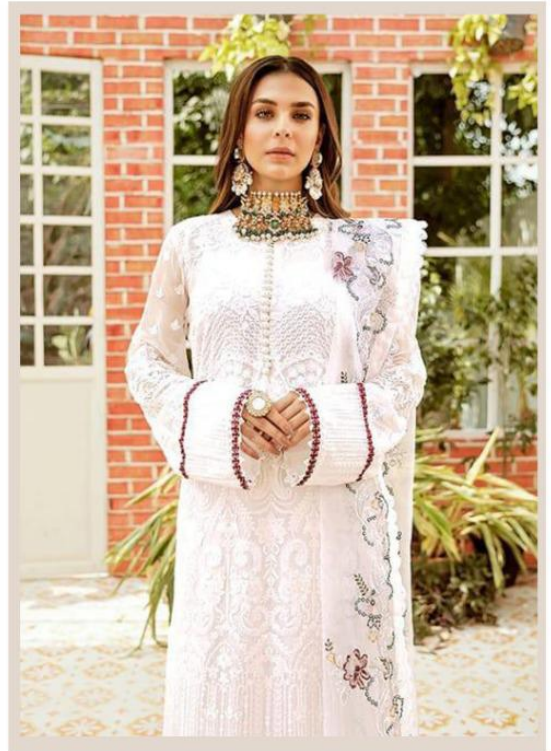


K SUITS
HAYYIRA

La-Fluer



Top - Georgette heavy embroidered
Inner Bottom - Santoon silk
Dupatta - Organza Tissue heavy embroidered



Top- Georgette heavy embroidered with daimond work
Inner- Santoon silk
Bottom- Santoon self embroidered
Dupatta- Nazneen heavy embroidered