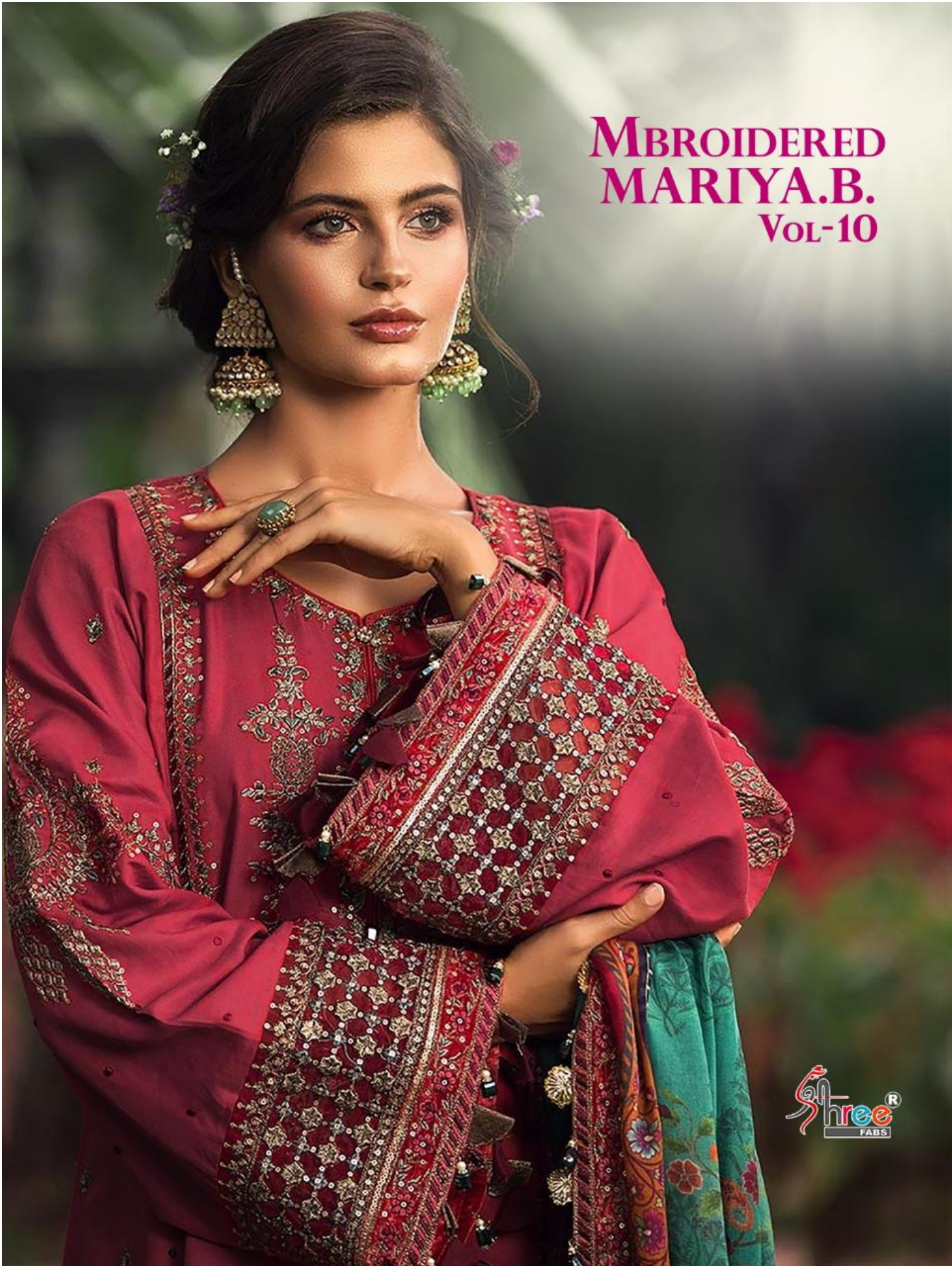
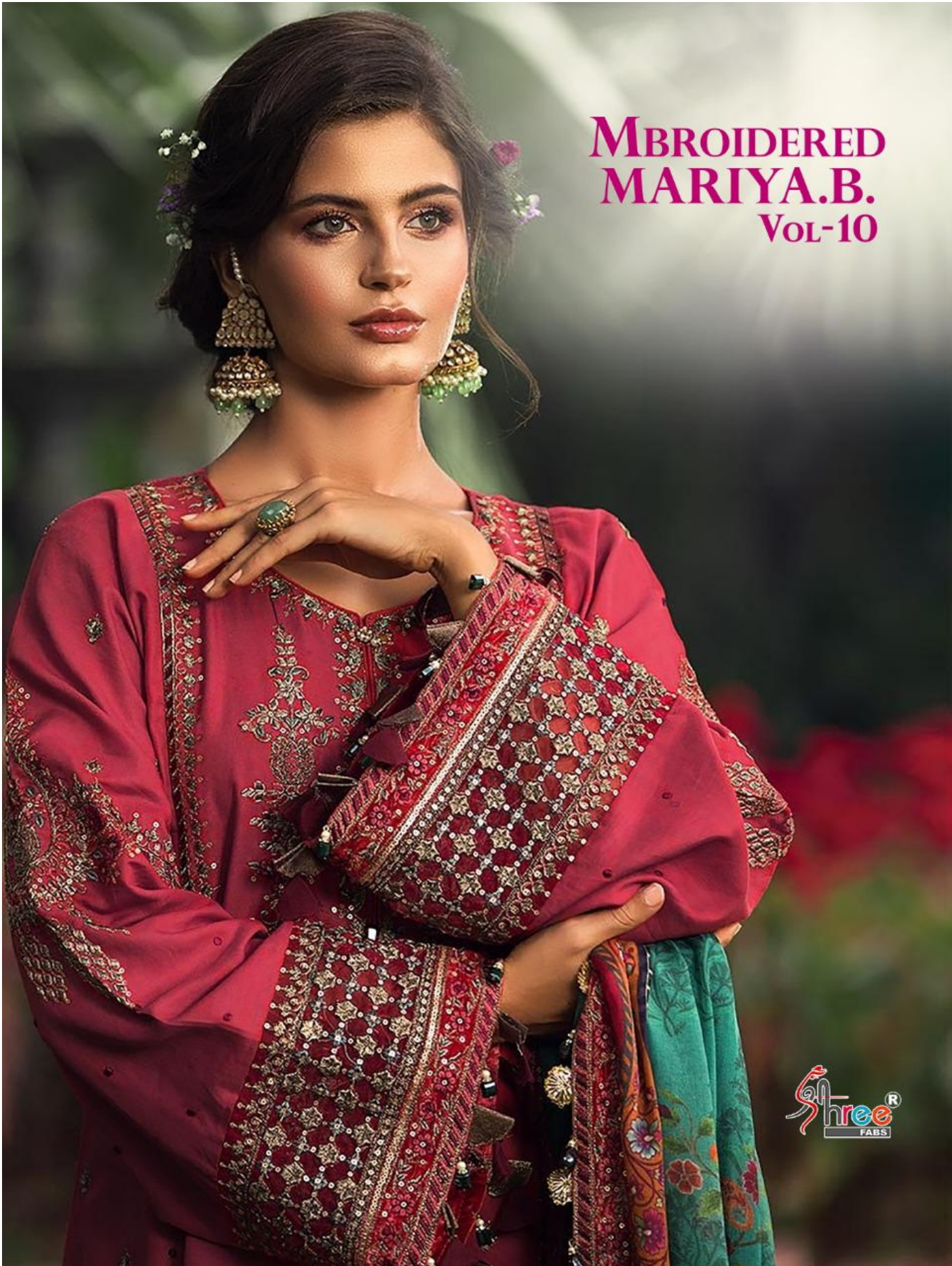


**EMBROIDERED
MARIYA.B.
VOL-10**



Shree[®]
FABS

**EMBROIDERED
MARIYA.B.
VOL-10**



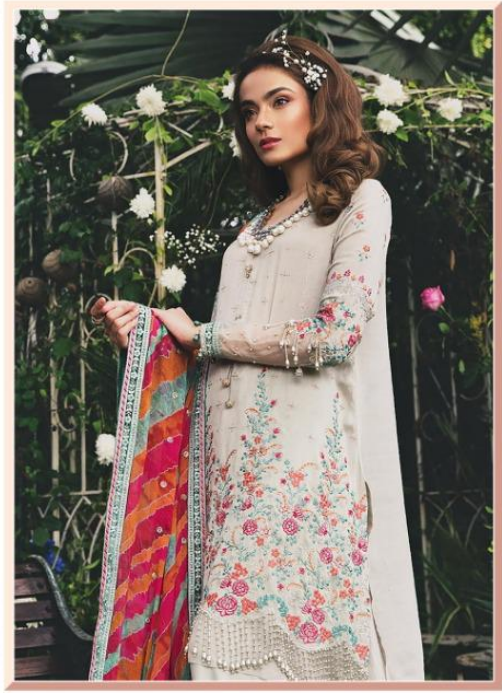
Shree[®]
FABS

EMBROIDERED
MARIYA.B.



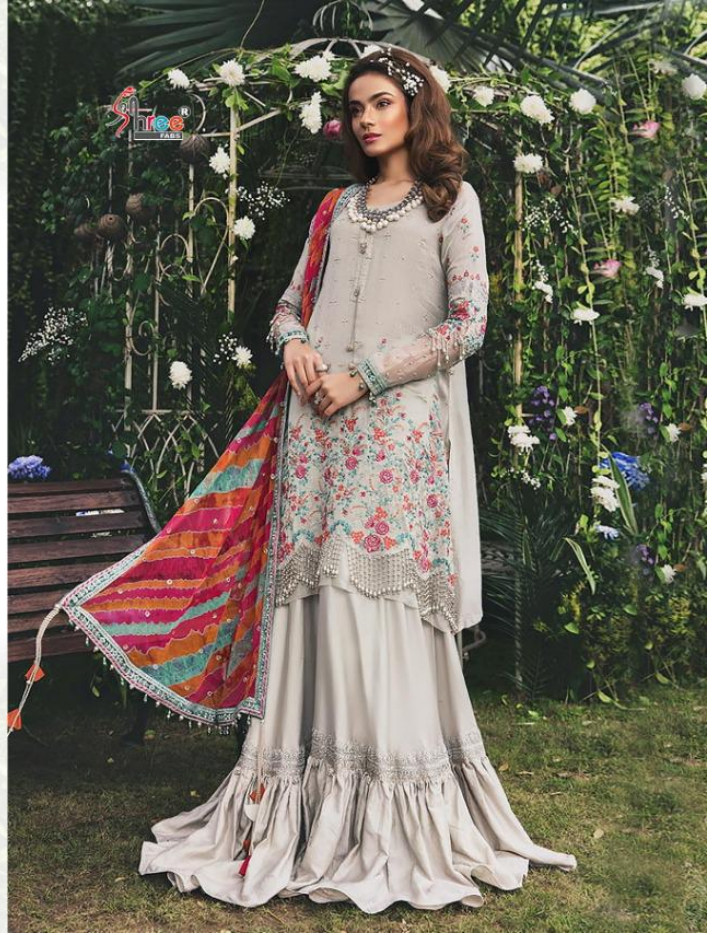
**EMBROIDERED
MARIYA.B.
VOL-10**





8142

**EMBROIDERED
MARIYA.B.**
Vol-10





**MBROIDERED
MARIYA.B.
VOL-10**





8143

**EMBROIDERED
MARIYA.B.**
Vol-10



Shree®
FABRI



**EMBROIDERED
MARIYA.B.
Vol-10**





Siree
FABRICS

EMBROIDERED
MARIYA.B.
Vol-10



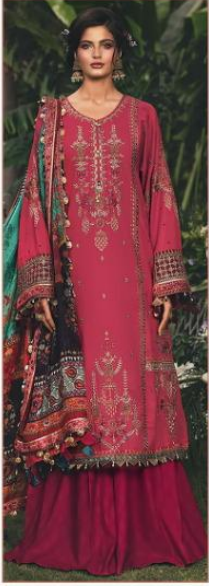
8144

**EMBROIDERED
MARIYA.B.**
Vol-10





**MBROIDERED
MARIYA.B.
Vol-10**



8141



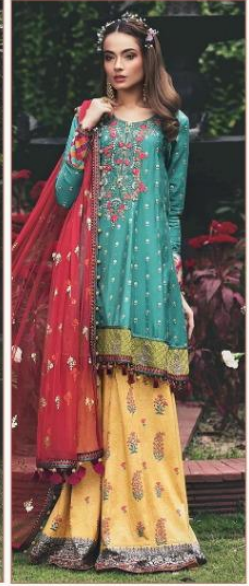
8142



8143



8144



8145



Shree
SAREE

**EMBROIDERED
MARIYA.B.
VOL-10**

A smaller version of the woman in the teal embroidered kurta, standing in a garden. The image is framed with a decorative border. At the top left, there is a logo for 'Shree SAREE'. Below the image, the text 'EMBROIDERED MARIYA.B. VOL-10' is written in a stylized font.



8145

**EMBROIDERED
MARIYA.B.**
Vol-10





8141

**EMBROIDERED
MARIYA.B.
Vol-10**

