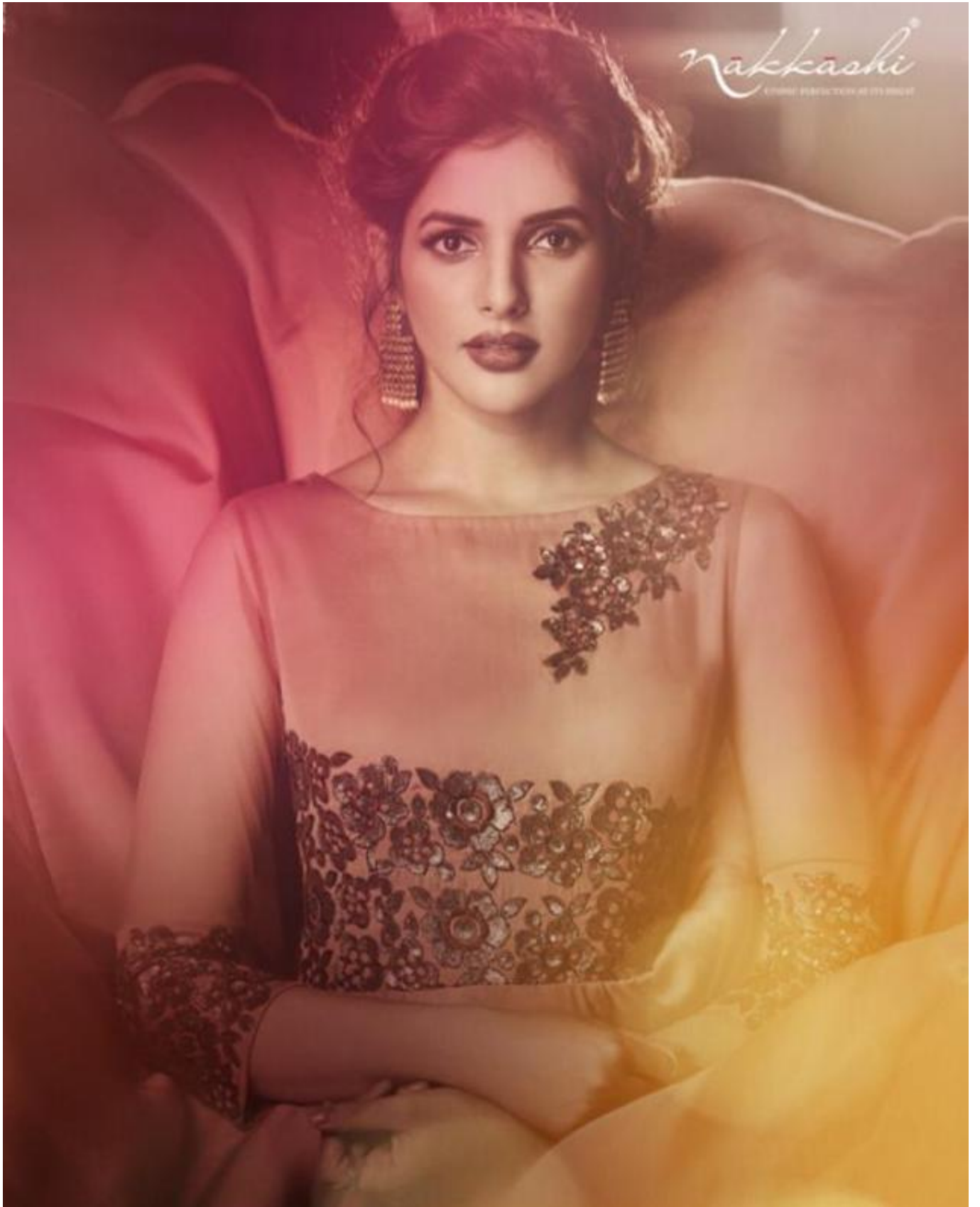


*nakkashi*  
L'UNIQUE FUSION DE LA TRADITION ET DE LA MODERNITE



*nakkashi*  
L'UNIQUE FUSION DE LA TRADITION ET DE LA MODERNITE



nakkashi



D.NO.- 3030



*Touch of*  
**MODERNITY**

Blue modal satin gown with  
resham work on it, paired with  
self colour chiffon dupatta



*nakkashi*

*Sartorial*  
**ELEGANCE**

Dusty cream modal satin  
gown with mirror work on  
it, paired with self colour  
chiffon dupatta

D.NO.:- 3081







nakkashi



Touch of  
MODERNITY

Chickoo modal satin  
gown with subtle resham  
work on it, paired with  
self colour chiffon  
dupatta

D.NO.:- 3082





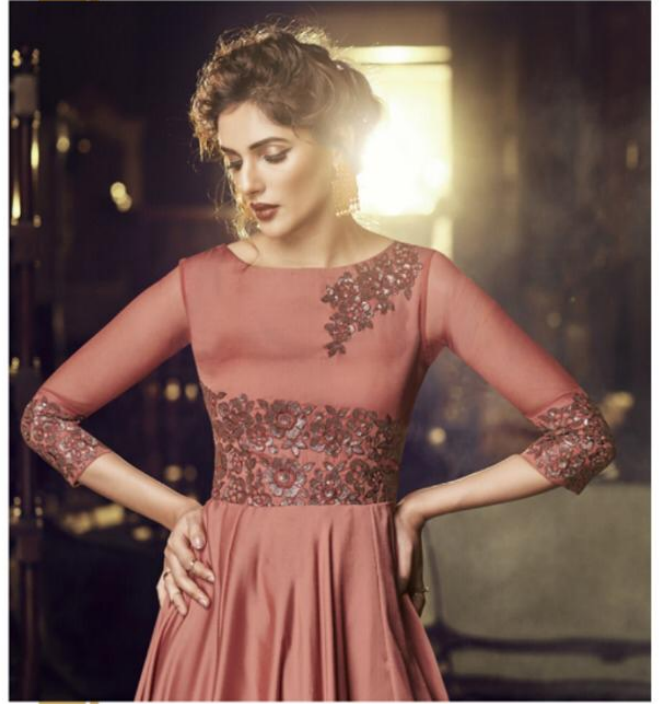


*Sartorial*  
**ELEGANCE**

Rose dawn modal satin gown with sequin and resham work on it, paired with self colour chiffon duppatta

D.NO.:- 3083

*nakkashi*



D.NO.- 3083



*nakkashi*

*Sheer*  
SOPHISTICATION

Sky colour net gown with  
blue resham and sequin  
work on it, paired with  
self chiffon duppatta

D.NO.:- 3034



*nakkashi*





*nakkashi*



D.NO.:- 3085



*nakkashi*



D.NO.:- 3086



*style*  
**SPLASH**

Dusty cedar modal satin  
gown with beige resham  
work on it, paired with  
self chiffon dupatta







D.NO.:- 3030



D.NO.:- 3031



D.NO.:- 3032



D.NO.:- 3033



D.NO.:- 3034



D.NO.:- 3035



D.NO.:- 3036

*nakkashi*  
FLAIR

# FLAIR

## GOWN (FULL STICH)

SR.NO.	D.NO	Gown	Jacket	STICH	Dupatta	RATE
1	3080	Blue Colour Modal Satin Fabrics	No	BUCRAM	Blue Colour Chiffon fabrics	2589
2	3081	Dusty Cream Colour Modal Satin Fabrics	No	BUCRAM	Dusty Cream Colour Chiffon Fabrics	2479
3	3082	Chickoo Colour Modal Satin Fabrics	No.	BUCRAM	Chickoo Colour Chiffon Fabrics	2449
4	3083	Rose Dawn Colour Modal Satin Fabrics	No.	BUCRAM	Rose Dawn Colour Chiffon Fabrics	2509
5	3084	Sky Colour Net Fabric	No.	BUCRAM	Sky Colour Chiffon Fabrics	2539
6	3085	Light Dusty Liril Colour Modal Satin Fabrics	No.	BUCRAM	Light Dusty Liril Colour Chiffon Fabrics	2289
7	3086	Dusty Cedar Colour Modal Satin Fabrics	No.	BUCRAM	Dusty Cedar Colour Chiffon Fabrics	2109
				<b>TOTAL</b>	<b>16963/-</b>	
				<b>AVERAGE</b>	<b>2423/-</b>	

**NOTE :-**

Gown Are Ready To wear For Size 40" But Can Be Altered Uptill 36" To 42"