



kimora®

MORPANKH



kimora®

MORPANKH

MORPANKH

VOL-16

DESIGN NO.
1601 to 1607

: TOP :

AUSTRALIAN SILK WITH ALL OVER BOOTI AND
EMBROIDERED SCALLOP BORDER ON HEM, SLEEVE

: DUPATTA :

CHINON DUPATTA WITH HEAVY EMBROIDERY
JAAL AND FOUR SIDED SCALLOP BORDER

: BOTTOM :

AUSTRALIAN SILK

KIMORA®

www.kimora.in





1601



1602



1605



1603



1604



1606

KIMORA®

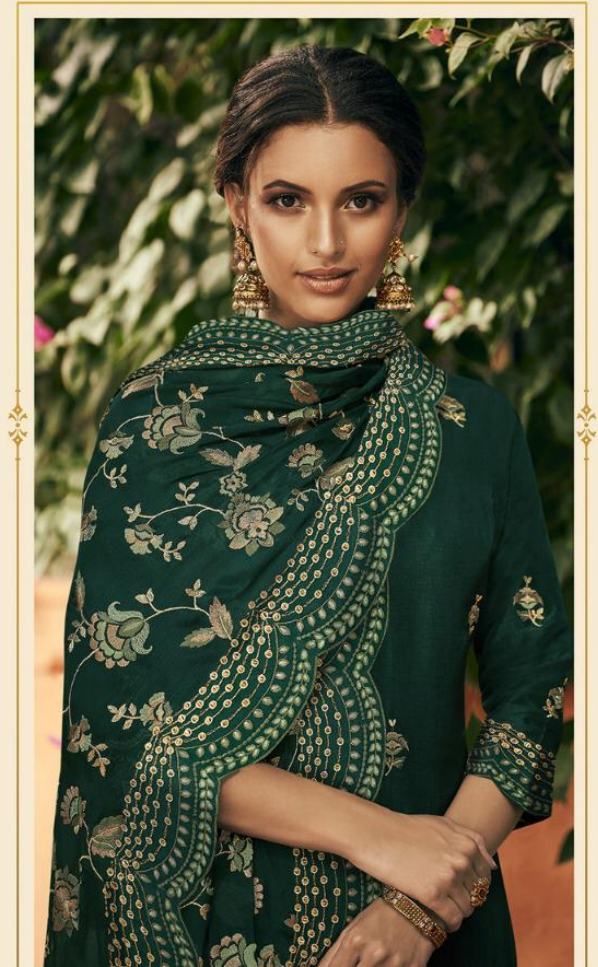


1607

MORPANKH



KIMORA®



KIMORA®

— ❖ 1606 ❖ —





KIMORA®



— 1605 —





KIMORA®



—◆◆◆ 1604 ◆◆◆—

KIMORA®



1603

KIMORA®



— 1603 —



KIMORA®

1602





kimora®

—◆— 1602









KIMORA®

MORPANKH

The designs were multi-utility &
we could see a few outfits that we could
wear up with other every day.