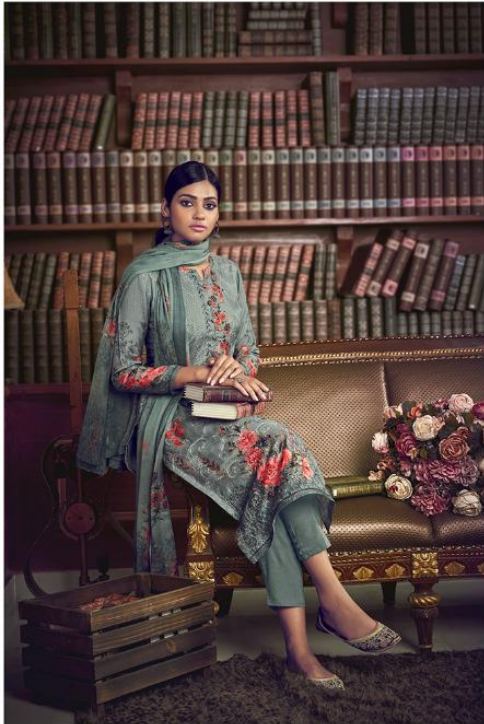


 **IBIZA**TM
"A lifestyle to follow"



ELISE-2



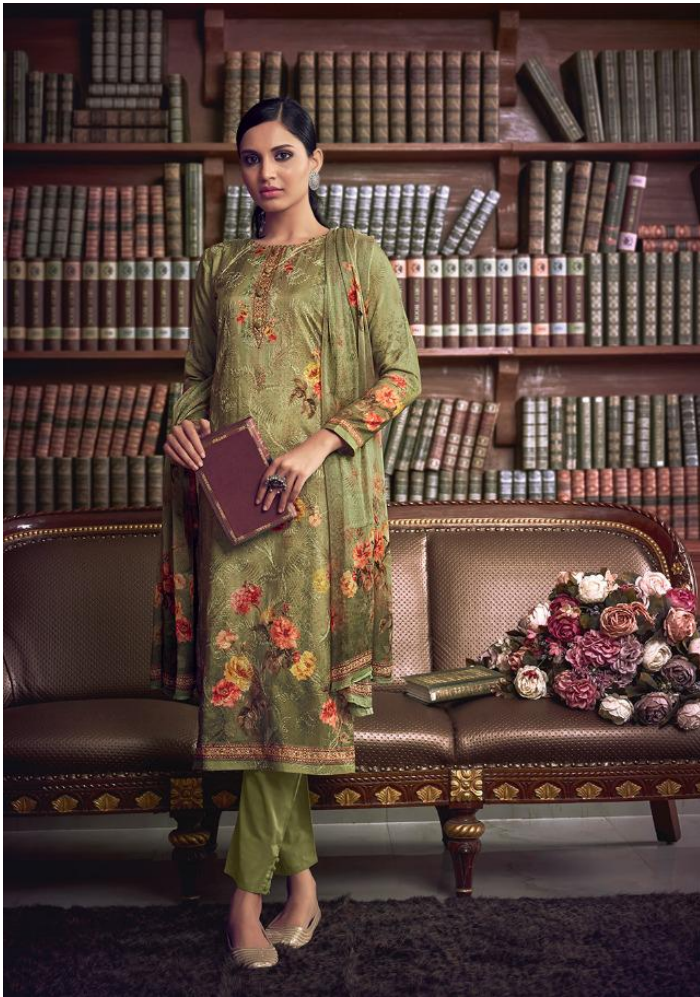
485

The only constant in fashion is change.





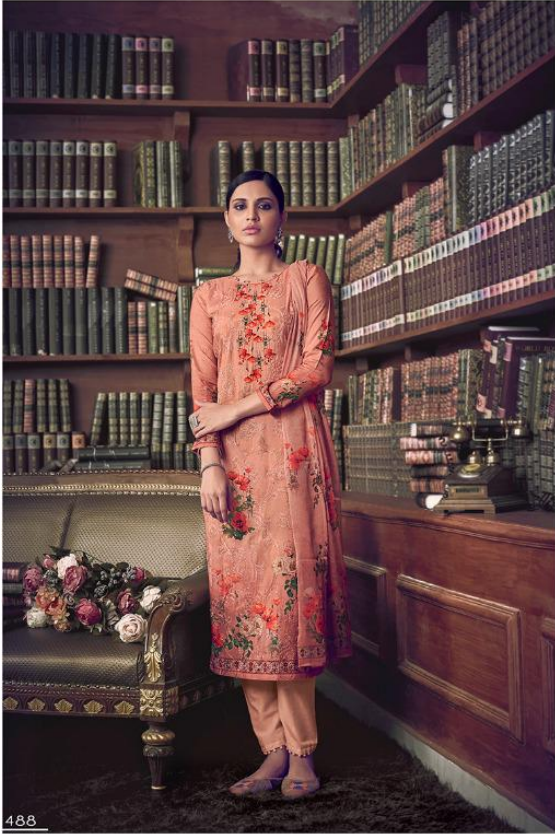
486
It's the kind of clothes that mothers and daughters can wear,
in terms of concept...



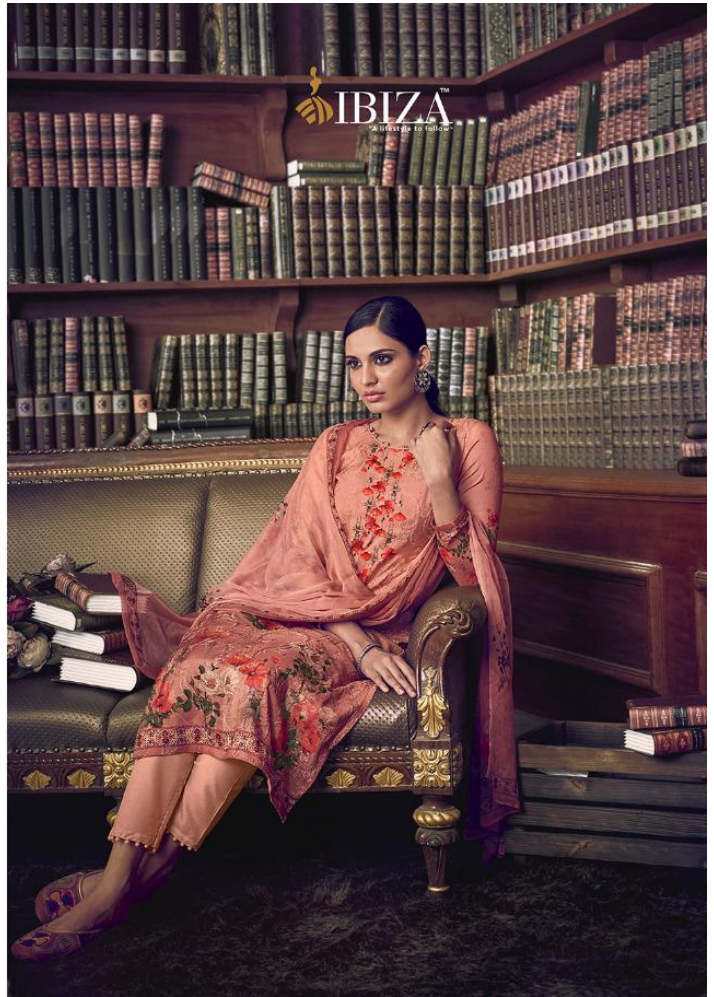
 **IBIZA**[™]
"A lifestyle to follow"



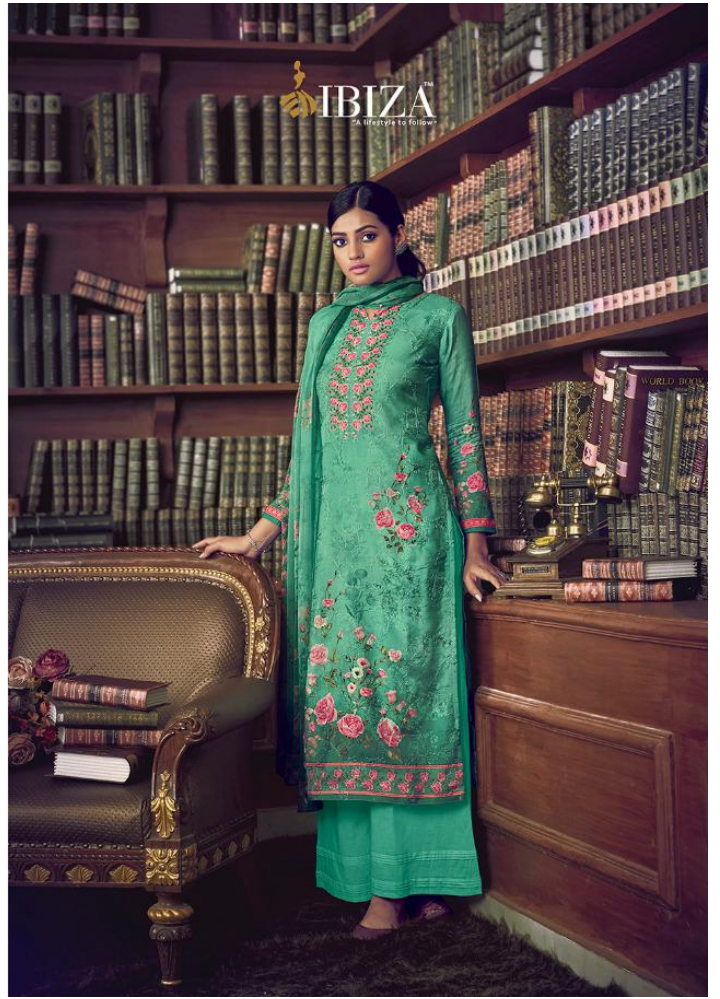
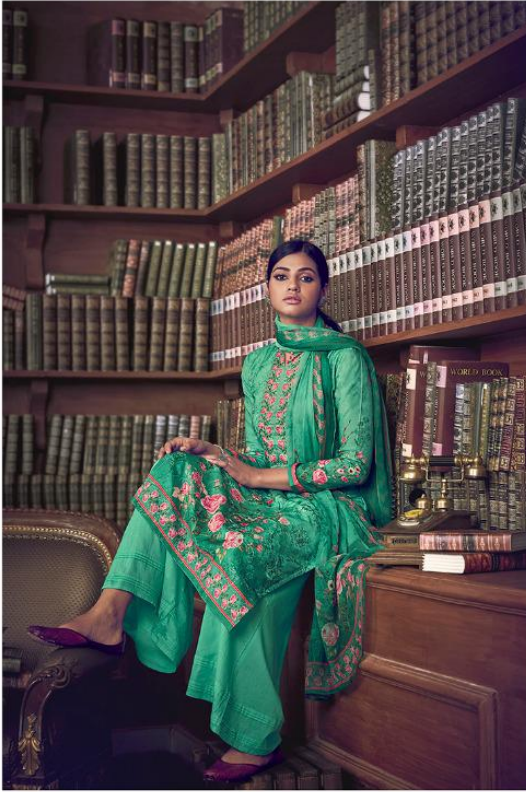
487
Its about taste, and its about lifestyle.



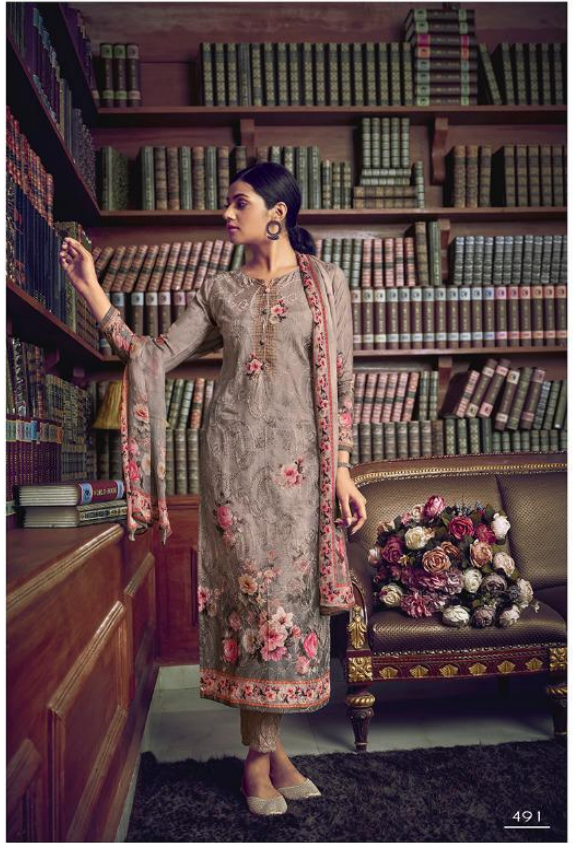
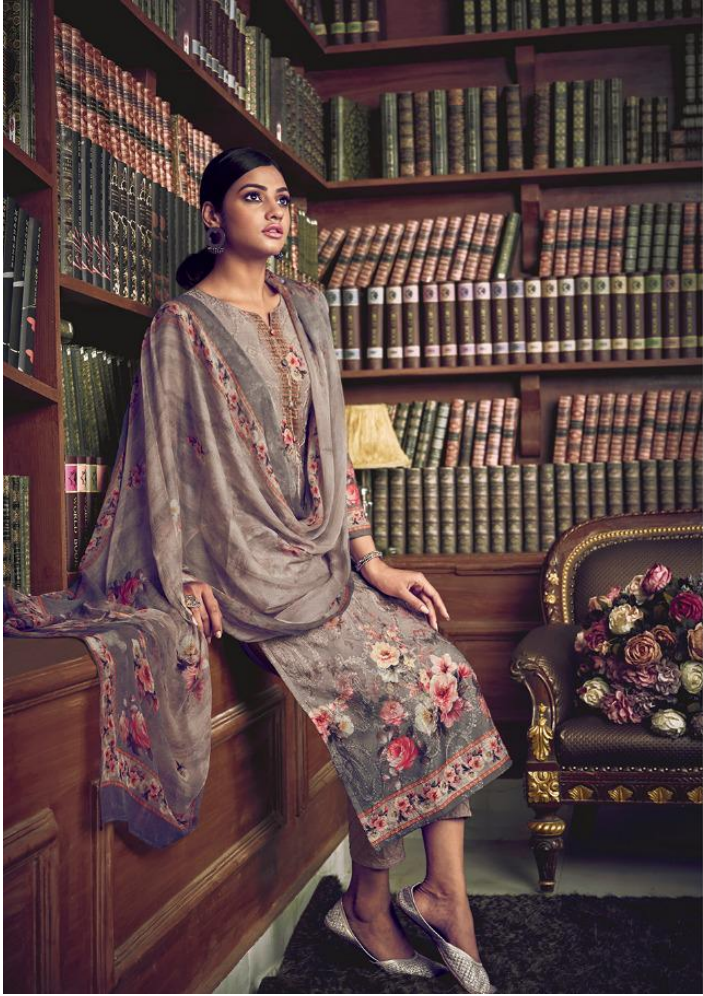
There is something about the sari that makes a woman look dignified, charming and every bit stylish.



I believe women of all ages can wear anything.





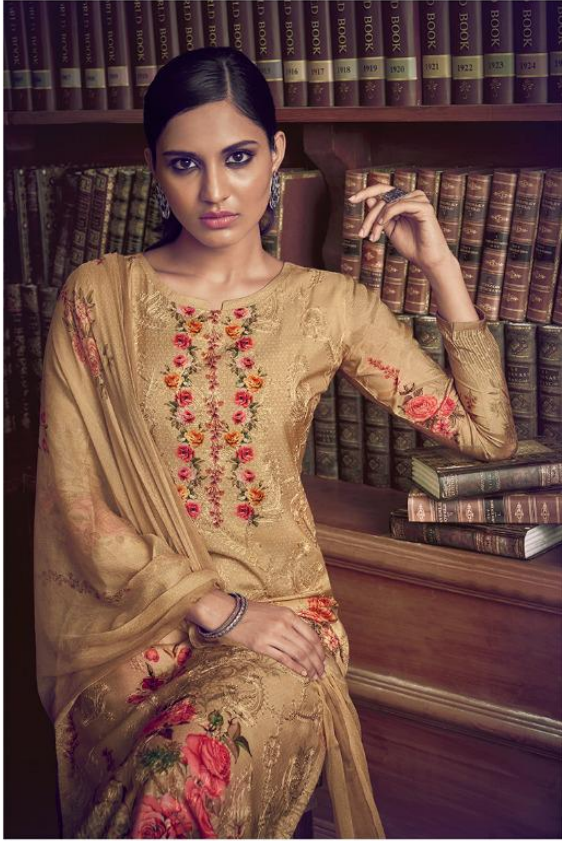


A woman with dark hair pulled back, wearing a grey saree with a delicate floral pattern and a matching blouse. She is standing in a library, leaning against a wooden bookshelf filled with books. The lighting is soft, highlighting the texture of her clothing and the depth of the bookshelves. She is wearing large hoop earrings, a ring on her right hand, and a bracelet on her left wrist.

IBIZA[™]
"A lifestyle to follow"

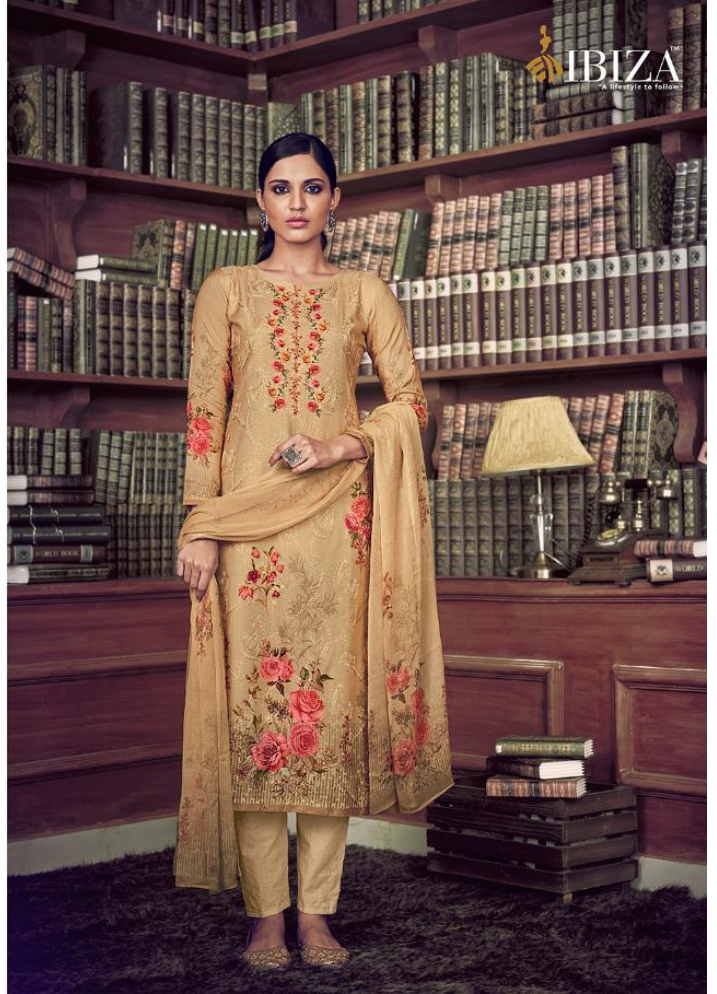
491

colours promise to get us in the mood, in a single bound.



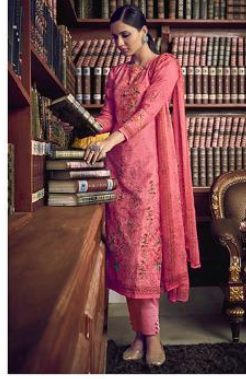
492

We're feeling beauty this summer with amazing design and pleasing





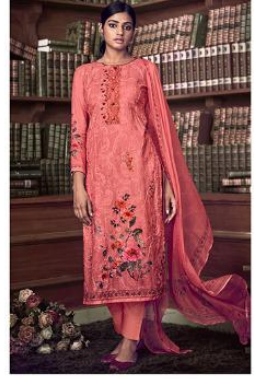
485



486



489



490



487



488



491

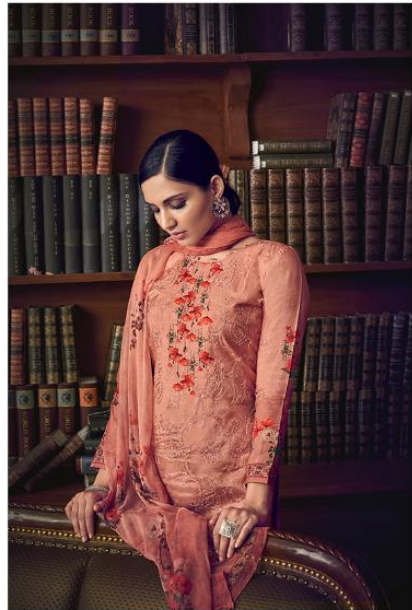


492

 **IBIZA**TM
"A lifestyle to follow"



ELISE-2



elegance speaks different language