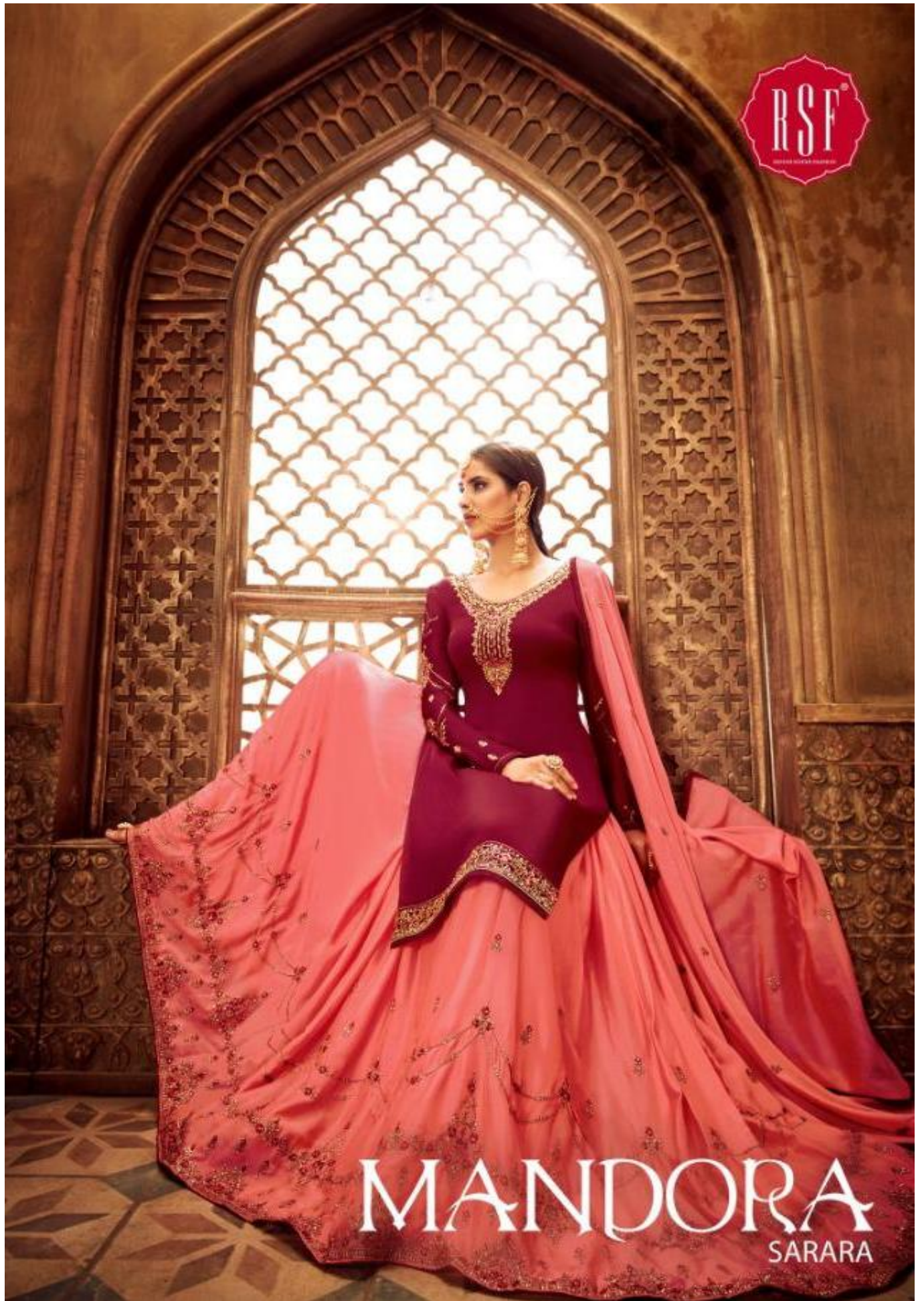


MANDORA
SARARA



MANDORA
SARARA

MANDORA

SARARA

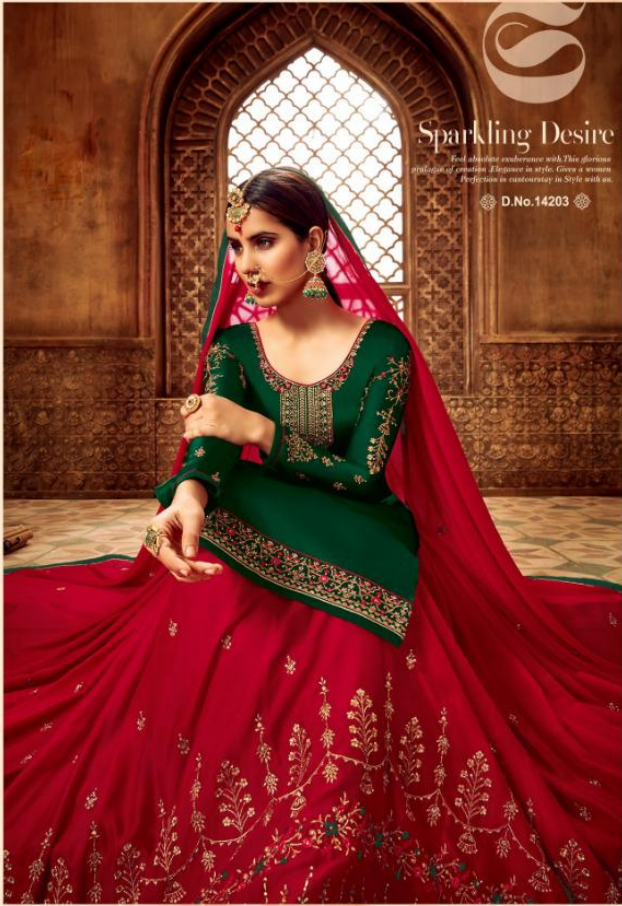


-: FABRIC DETAILS -:

TOP	SATIN GEORGETTE
INNER	DULL SANTUN
BOTTOM	GEORGETTE WITH SANTUN
DUPATTA	CHINON



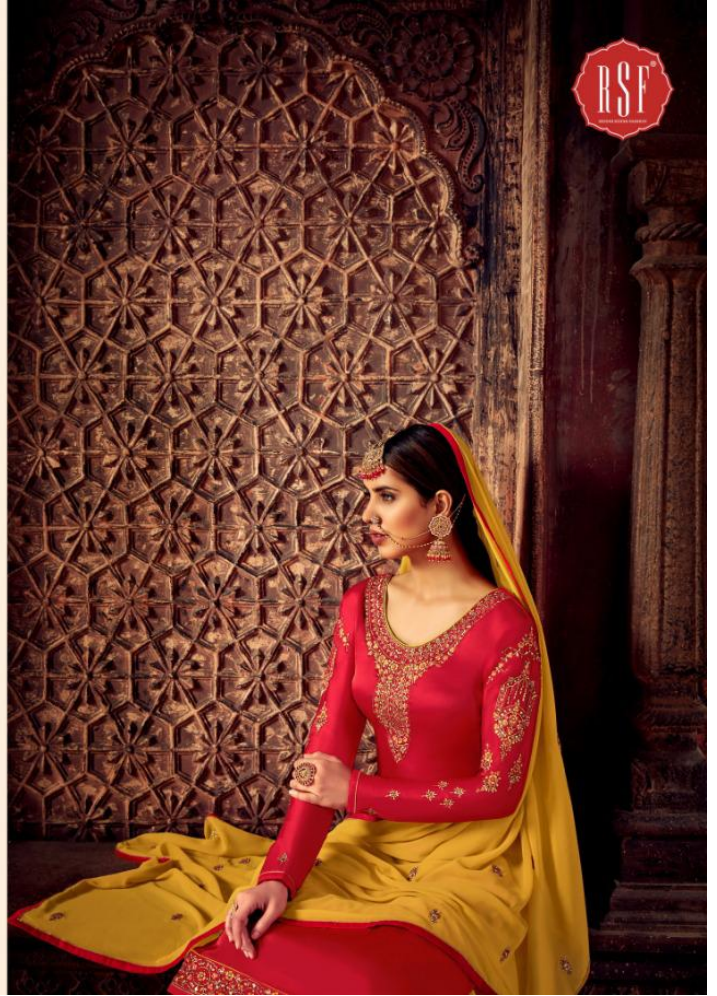
D.No.14201





Luxious Speed

*We don't design cloths we design Conviction and confidence in you.
Powerful women should reflect two attributes, classy and fabulous.*



MANDORA

SARARA

D.No.14201



-: FABRIC DETAILS :-

TOP	SATIN GEORGETTE
INNER	DULL SANTUN
BOTTOM	GEORGETTE WITH SANTUN
DUPATTA	CHINON





Simply Splendid

*Establishing new outlook for trends
and fashion preferences. Nourishing unbelievable
Crafts with freshness in styling for Perfect charming
appearance of you.*



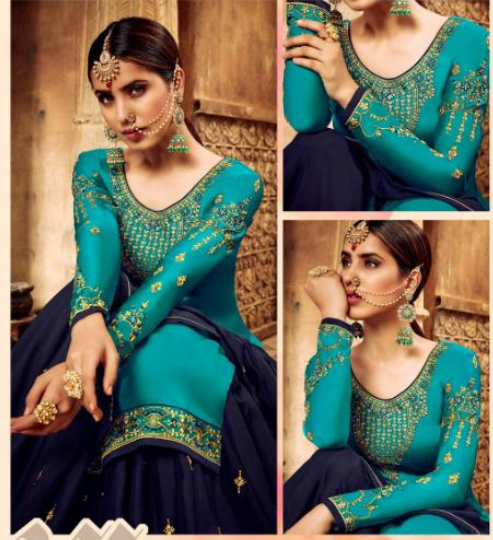
❖ D.No.14205 ❖



Dramatic Grace

*Tradition are forever with us Complimenting with elegance and grandeur.
Modern women grows herself in Contemplation of our traditional outfits.*





Wonderous Creation
*the elegant collection and fashion patterns. Define true glamour
to women fashion brings radiance and grace
And we bring visibility to the fashion*



21

Traditional Twist

Essential modern colours in the femininity provide you looks which you can wear with pride. Culture and heritage should never and in any way come in the way of fashion.





MANDORA

SARARA



D.No.14201



D.No.14202



D.No.14203



D.No.14204



D.No.14205



D.No.14206





Stunning Beauty
*Empower and fulfill by covering our vision on you. Women are
wise and fragile. They need to be groomed with our detailed pattern.*



RSF



CLASSIC BEAUTY

We bring perfection of craftsmanship To establish charm
in your personality. We promise to radiate perfect style.
Cos we know fashion fades but style is eternal.



D.No. 14402



Majestic Shade

*This splendid piece of fashion, perfectly
brings out your personality.
Discover and add royalty to you
With our seasonal habloiments*





Rhetorical Collection

*Remembrance of modernization gives us Power to look unbeatable yet
Careful Experience complete pleasure and elegance
with our trend setting collection*

◆ D.No.10002 ◆

